

Vivado Design Suite Tutorial

Using Constraints

UG945 (v2018.3) December 5, 2018



Revision History

The following table shows the revision history for this document.

Section	Revision Summary
12/05/2018 Version 2018.3	
General updates	Updated screen displays.
Step 3: Creating Timing Constraints	Revised step 2 on page 20.
06/06/2018 Version 2018.2	
General updates	Editorial updates only. No technical content updates.
04/04/2018 Version 2018.1	
General updates	<ul style="list-style-type: none">• Updated menu commands.• Updated for 2018.1.

Table of Contents

Revision History	2
Using Constraints Tutorial	4
Overview	4
Tutorial Design Description	5
Hardware and Software Requirements	5
Preparing the Tutorial Design Files	5
Lab 1: Defining Timing Constraints and Exceptions	6
Introduction	6
Step 1: Opening the Example Project	6
Step 2: Defining Constraint Sets and Files	14
Step 3: Creating Timing Constraints	15
Step 4: Using the Constraints Editor	24
Step 5: Saving Constraints	30
Step 6: Clock Interaction Report	32
Step 7: Timing Summary Report	33
Conclusion	36
Lab 2: Setting Physical Constraints	37
Introduction	37
Step 1: Opening the Project	37
Step 2: Adding Placement Constraints	38
Step 3: Defining Additional Physical Constraints	41
Step 4: Defining Constraints with Object Properties	42
Step 5: Saving Constraints	45
Conclusion	46
Legal Notices	47
Please Read: Important Legal Notices	47



IMPORTANT: This tutorial requires the use of the Kintex® -7 family of devices. You will need to update your Vivado® tools installation if you do not have this device family installed. Refer to the Vivado Design Suite User Guide: Release Notes, Installation, and Licensing ([UG973](#)) for more information on Adding Design Tools or Devices.

Overview

This tutorial is comprised of two labs that demonstrate aspects of constraining a design in the Vivado Design Suite. The constraints format supported by the Vivado Design Suite is called Xilinx® Design Constraints (XDC), which is a combination of the industry standard Synopsys® Design Constraints and proprietary Xilinx constraints.



VIDEO: You can also learn more about defining constraints in the Vivado Design Suite by viewing the quick take video at [Vivado Design Constraints Overview](#)

TRAINING: Xilinx provides training courses that can help you learn more about the concepts presented in this document. Use these links to explore related courses:



- [Essentials of FPGA Design](#)
- [Vivado Design Suite Static Timing Analysis and Xilinx Design Constraints](#)
- [Vivado Advanced Tools and Techniques](#)

XDCs are not just simple strings; they are Tcl commands that the Vivado Tcl interpreter sequentially reads and parses. You can enter design constraints in several ways at different points in the design flow. You can store XDCs in one or more files that can be added to a constraint set in Vivado Project Mode, or read the same files directly into memory using the `read_xdc` command in Non-Project mode. For more information on Project and Non-Project modes, refer to the *Vivado Design Suite User Guide: Design Flows Overview* ([UG892](#)). With a design open in Vivado tools, you can also type constraints as commands directly in the Tcl console when working in the Vivado IDE or at the Tcl command prompt when working outside of the IDE. This is particularly powerful for defining, validating, and debugging new constraints interactively in the design.

The Vivado Design Suite synthesis and implementation tools are timing driven. Having accurate and correct timing constraints is vital for meeting design goals and ensuring correct operation. Because the Vivado tools are timing driven, it is important to fully constrain a design, but not over-constrain, or under-constrain it. Over-constraining a design can lead to long run-times and sub-optimal results because the tool can struggle with unrealistic design objectives. Under-constraining a design can cause

the Vivado tools to perform unnecessary optimizations, such as examining paths with multicycle delays or false paths, and prevent focus on the real critical paths.

This tutorial discusses different methods for defining and applying design constraints.

Tutorial Design Description

The sample design used throughout this tutorial consists of a small design called `project_cpu_netlist`. There is a top-level EDIF netlist source file, as well as an XDC constraints file.

The design targets an XC7K70T device. A small design is used to allow the tutorial to be run with minimal hardware requirements and to enable timely completion of the tutorial, as well as to minimize the data size.

Hardware and Software Requirements

This tutorial requires that the 2016.3 Vivado Design Suite software release or later is installed.

See the *Vivado Design Suite User Guide: Release Notes, Installation, and Licensing* ([UG973](#)) for a complete list and description of the system and software requirements.

Preparing the Tutorial Design Files

You can find a ZIP file containing the files for this tutorial in the examples directory of the Vivado Design Suite software installation, at the following location:

```
<Vivado_install_area>/Vivado/<version>/examples/Vivado_Tutorial.zip
```

Extract the ZIP file contents from the software installation into any write-accessible location.

The location of the extracted `Vivado_Tutorial` directory is referred to as the `<Extract_Dir>` in this Tutorial.

You can also extract the provided ZIP file at any time to restore the files to their starting condition.

Note: *You will modify the tutorial design data while working through this tutorial. Use a new copy of the original `Vivado_Tutorial` directory each time you start this tutorial.*

Lab 1: Defining Timing Constraints and Exceptions

Introduction

In this lab, you will learn two methods of creating constraints for a design. You will use the Kintex[®]-7 CPU Netlist example design that is included in the Vivado[®] IDE.

Step 1: Opening the Example Project

Open Vivado IDE:

On Linux:

1. Change to the directory where the lab materials are stored:
`cd <Extract_Dir>/Vivado_Tutorial`
2. Launch the Vivado IDE: **vivado**

On Windows:

1. Launch the Vivado Design Suite IDE:

Start > All Programs > Xilinx Design Tools > Vivado 2018.x > Vivado 2018.x

Note: Your Vivado Design Suite installation might be called something other than Xilinx Design Tools on the Start menu.

Note: As an alternative, click the **Vivado 2018.x** Desktop icon to start the Vivado IDE.

The Vivado IDE Getting Started page contains links to open or create projects and to view documentation.

2. From the Getting Started page, click **Open Example Project**, as shown in the following figure.

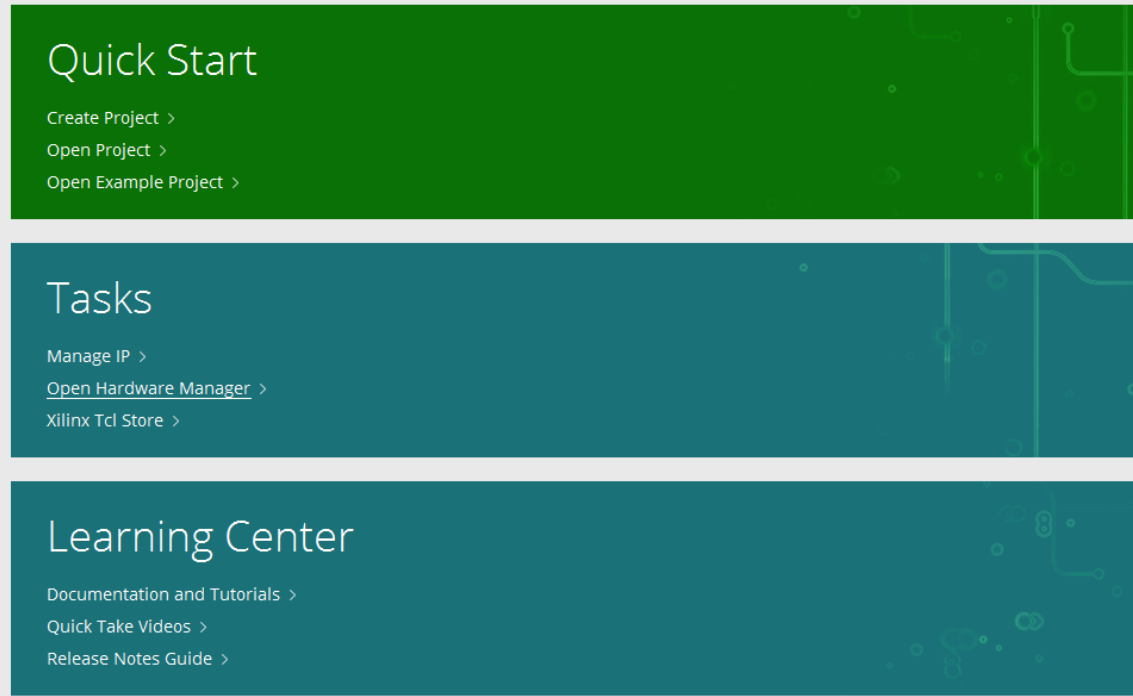


Figure 1: Open Example Project

The Open Example Project wizard opens to the Open Example Project page, as shown in the following figure.

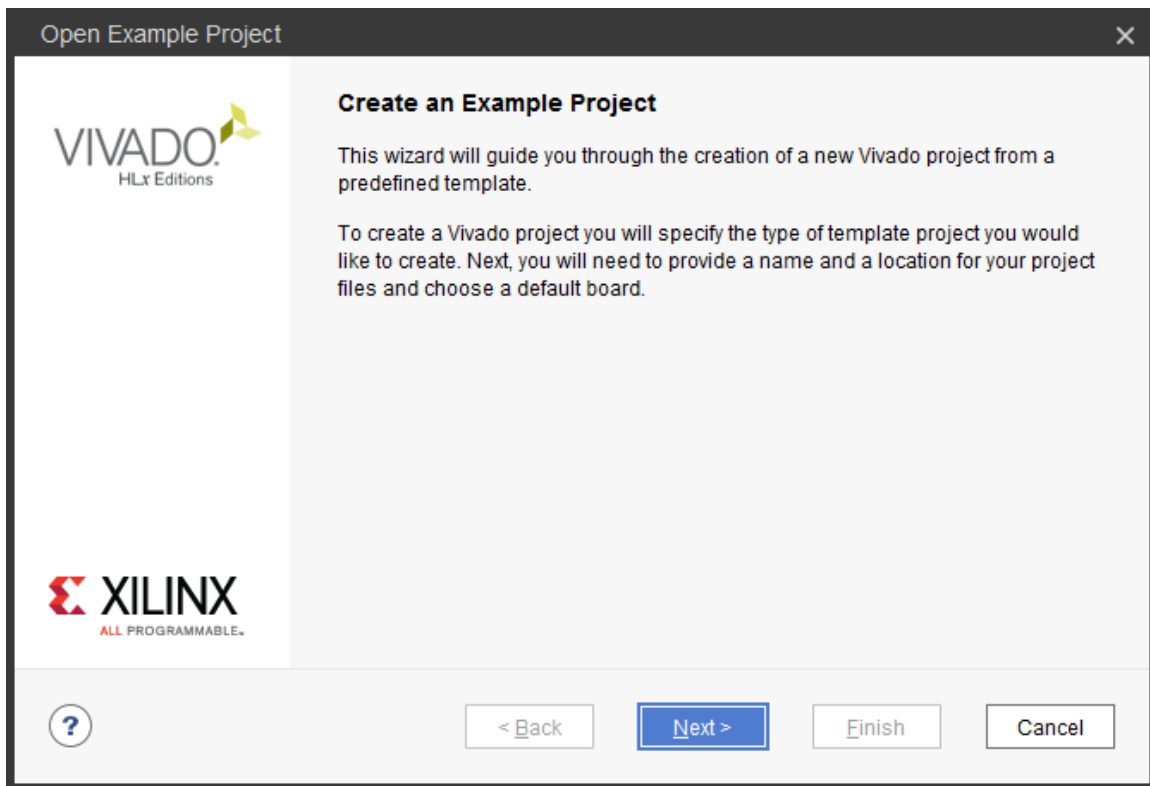


Figure 2: Create an Example Project Page of the Open Example Project Wizard

3. Click **Next**.
4. In the Select Example Project page, select **CPU (Synthesized)**, as shown in the following figure.

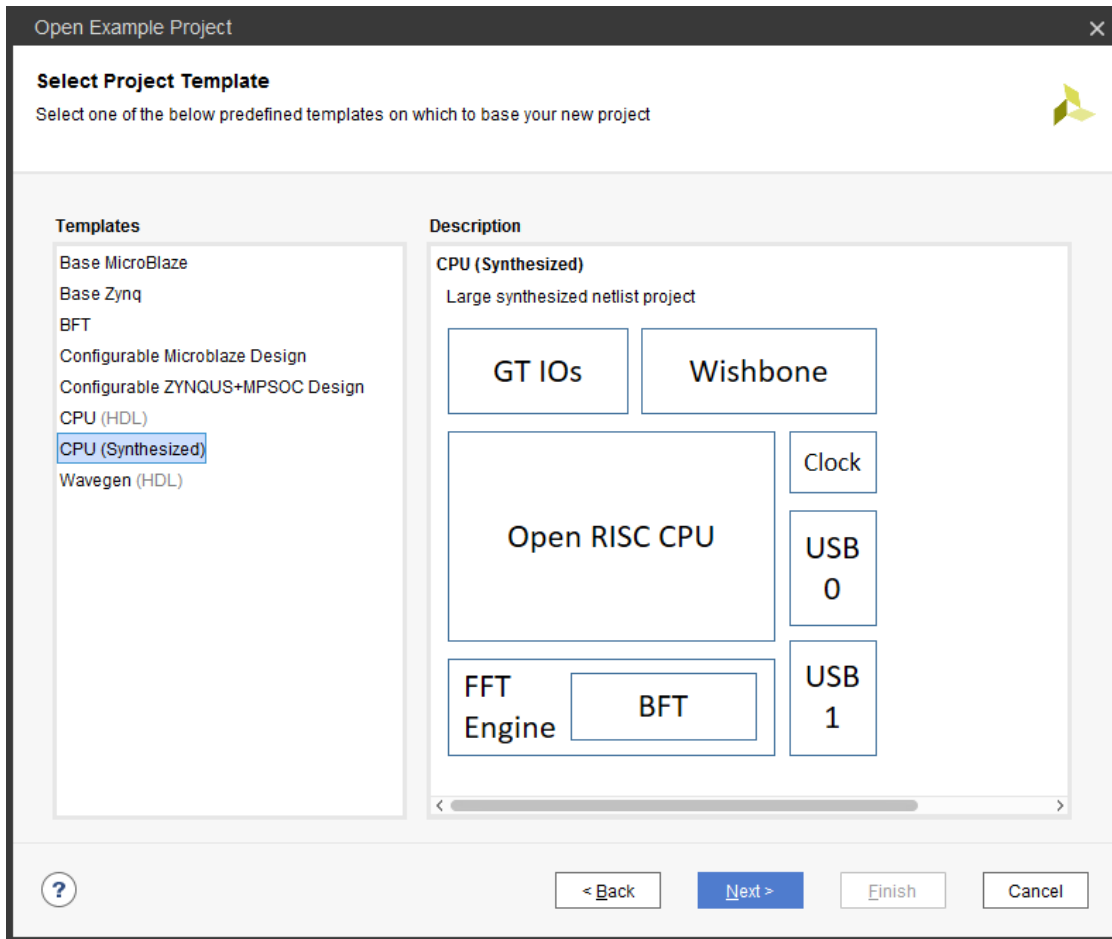


Figure 3: Select Example Project Page of the Open Example Project Wizard

5. Click **Next**.

6. In the Project Name page, specify the project name and location, as shown in the following figure.

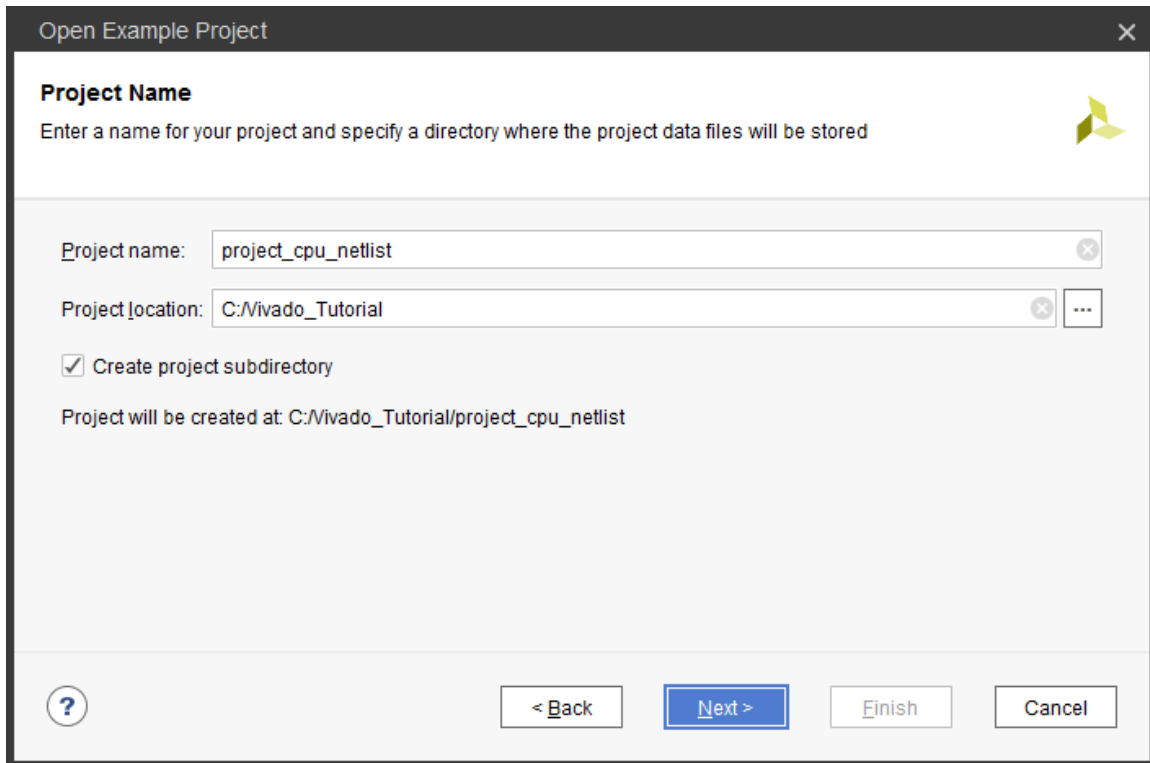


Figure 4: Project Name Page of the Open Example Project Wizard

7. Specify the following:

- Project name: **project_cpu_netlist**
- Project location: **<Extract_Dir>**

8. Click **Next**.

9. In the Default Part page, select the default part as shown in the following figure.

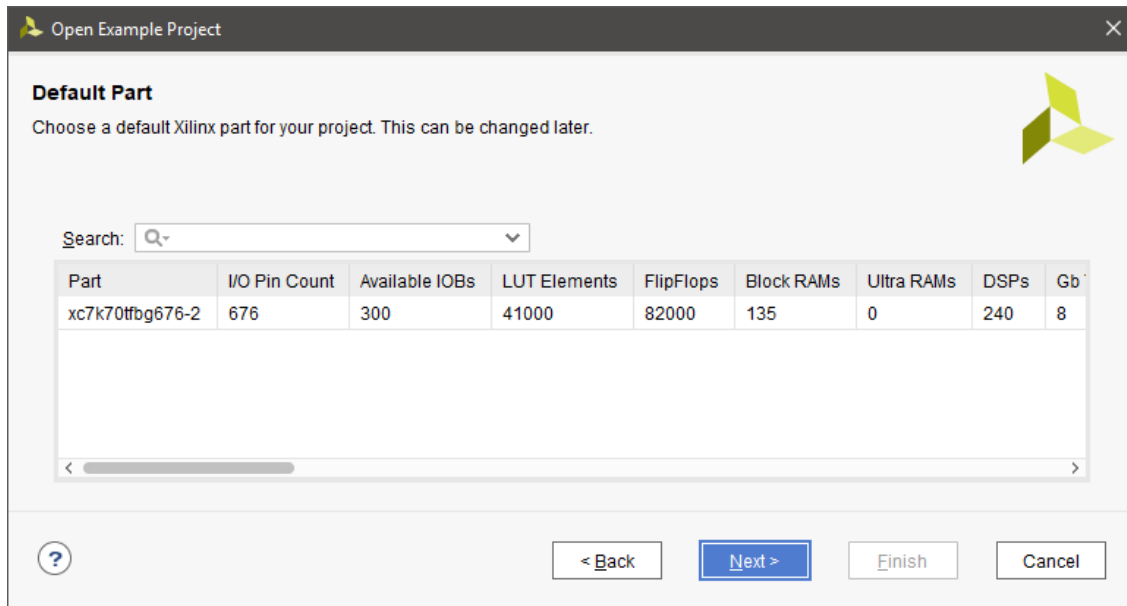


Figure 5: Default Part Page of the Open Example Project Wizard

A New Project Summary appears, as shown in the following figure.

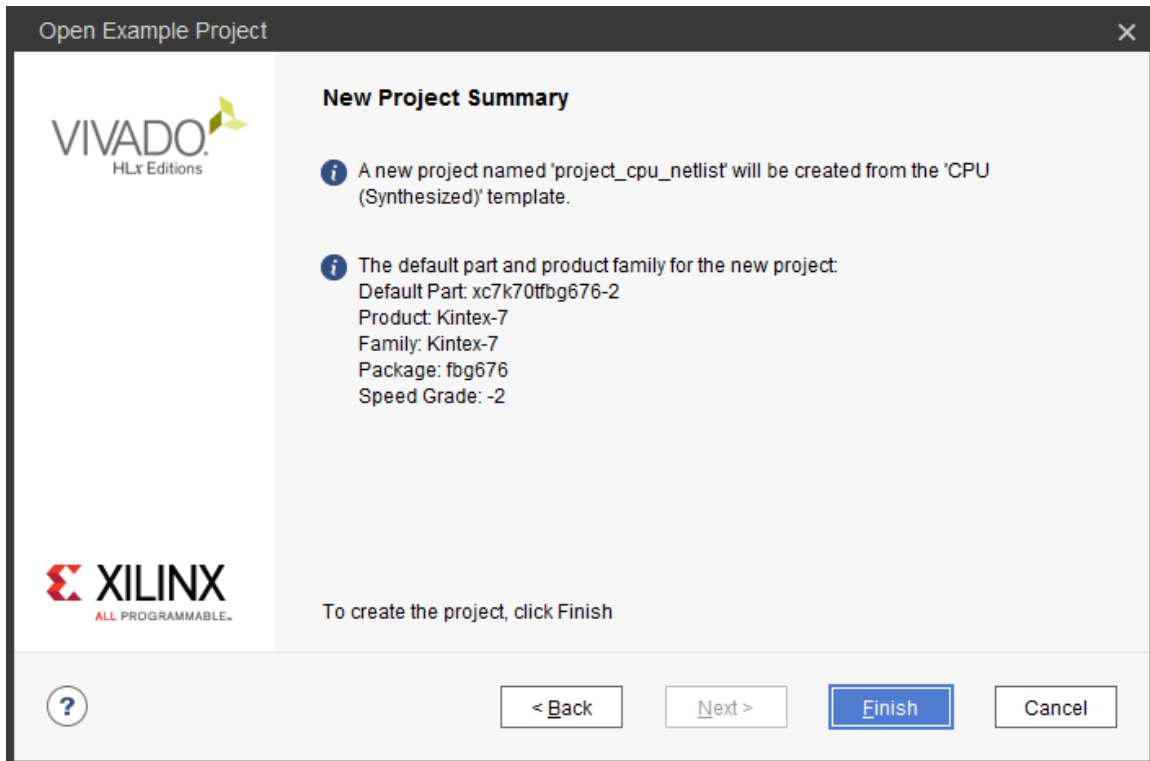


Figure 6: New Project Summary Page of the Open Example Project Wizard

10. Click **Finish** to finish creating the project.

The Vivado IDE displays the default view of the opened project, as shown in the following figure.

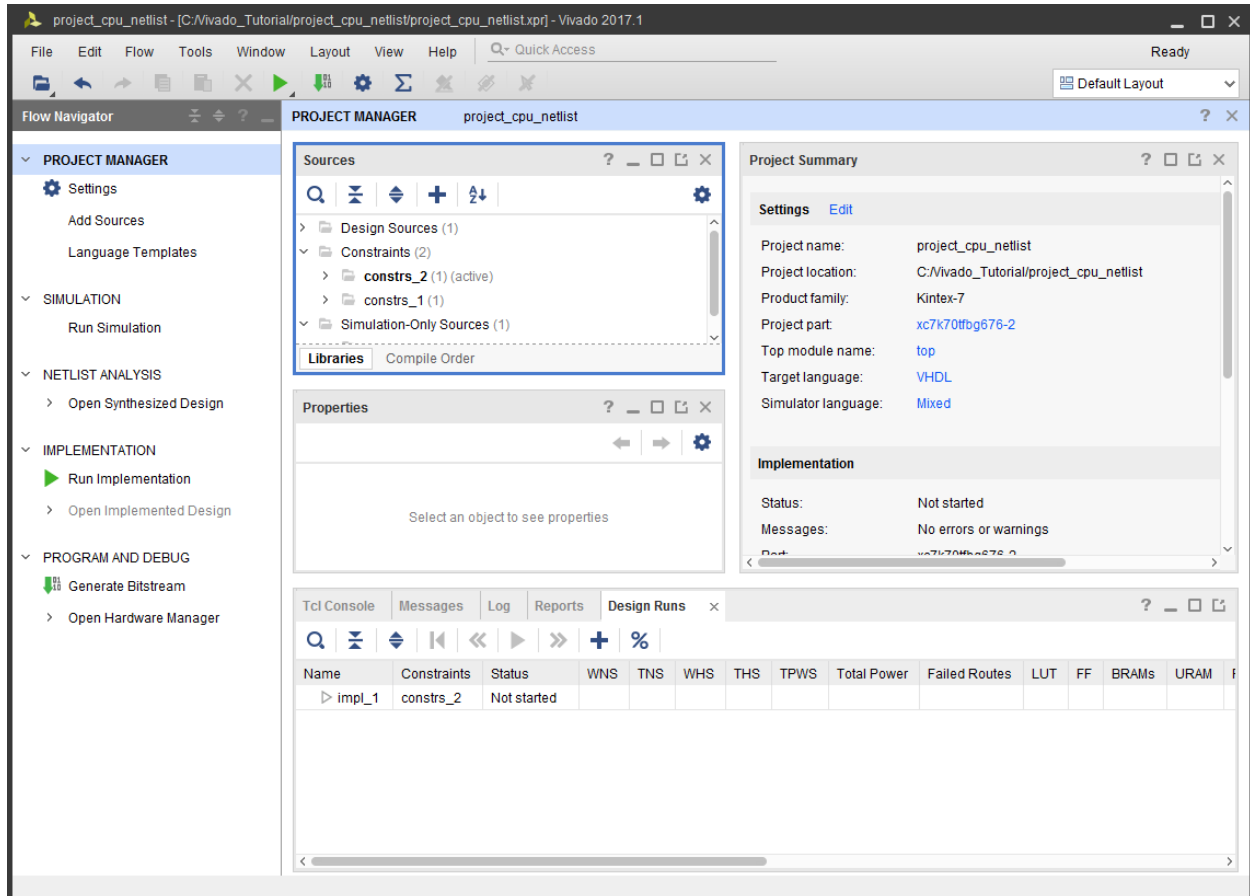


Figure 7: Project Default View

Step 2: Defining Constraint Sets and Files

Start by creating a new constraint set and adding an empty XDC constraints file to it. The example design already contains two constraint sets, but you do not use them for this lab.

1. From the Flow Navigator, click **Add Sources** in the Project Manager section.
2. From the Add Sources dialog box, select **Add or create constraints**.
3. Click **Next**.
4. From the Add or Create Constraints dialog box, use the Specify Constraint Set drop-down menu to select **Create Constraint Set** as shown in the following figure.

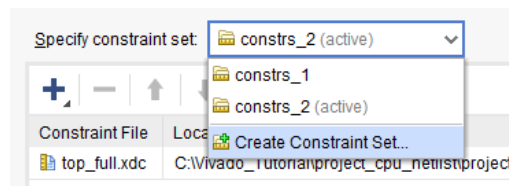



Figure 8: Create Constraint Set Drop-Down Menu

5. In the Create Constraint Set dialog box, specify the constraint set name as **lab1** and click **OK**.
6. Enable the **Make active** check box.
7. Click the **Add** button  and select **Create File** to add a new XDC file to the project.
8. The Create Constraints File dialog box appears.

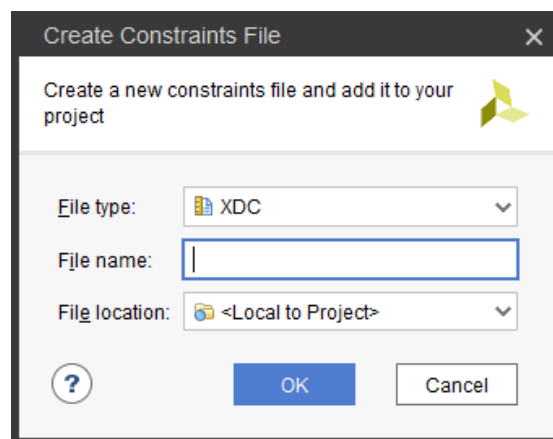


Figure 9: Create Constraints File Dialog Box

9. Type **timing** as the file name, and leave the file location set to **<Local to Project>**.
10. Click **OK**.

The `timing.xdc` file is added to the `lab1` constraint set.

11. Click **Finish** to complete the creation of the new constraint set and XDC file.

You should see the new constraint set and XDC file in the Sources window, as shown in the following figure. The constraint set is made active, as you directed when you created it.

12. In the Sources window (shown in the following figure), right-click `timing.xdc` and select Set as Target Constraint File.

This sets the `timing.xdc` file as the target XDC file. All constraints added to the design are saved in the target XDC file.

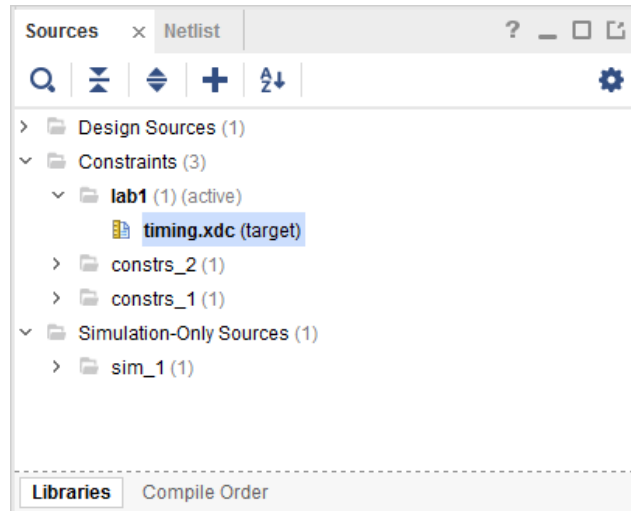


Figure 10: Sources Window

Step 3: Creating Timing Constraints

In this step, you will open the synthesized design and use the Vivado® Timing Constraints wizard. The Timing Constraints wizard analyzes the gate level netlist and finds missing constraints. Use the Timing Constraints wizard to generate constraints for this design.

1. From the Flow Navigator, click **Open Synthesized Design**.
2. When the synthesized design opens, click **Constraints Wizard** under the Synthesized Design section.

The introduction page of the Timing Constraints wizard appears. This page describes the types of constraints that the wizard creates: Clocks, Input and Output Ports, and Clock Domain Crossings.

3. After reading the page, click **Next** to continue.

The Primary Clocks page of the Timing Constraints wizard displays all the clock sources with a missing clock definition. For this design, the wizard detected five missing clock constraints that are needed to time logical paths, and four missing clock constraints that are only needed to verify pulse width and minimum or maximum period requirements.

Recommended Constraints

<input checked="" type="checkbox"/>	Object	Name	Frequency (MHz)	Period (ns)	Rise At (ns)	Fall At (ns)	Jitter (ns)
<input checked="" type="checkbox"/>	TXOUTCLK	mgtEngine/R...XOUTCLK_OUT	undefined	undefined			
<input checked="" type="checkbox"/>	TXOUTCLK	mgtEngine/R...XOUTCLK_OUT	undefined	undefined			
<input checked="" type="checkbox"/>	TXOUTCLK	mgtEngine/R...XOUTCLK_OUT	undefined	undefined			
<input checked="" type="checkbox"/>	TXOUTCLK	mgtEngine/R...XOUTCLK_OUT	undefined	undefined			
<input checked="" type="checkbox"/>	sysClk	sysClk	undefined	undefined			

Constraints for Pulse Width Check Only

<input type="checkbox"/>	Object	Name	Frequency (MHz)	Period (ns)	Rise At (ns)	Fall At (ns)	Jitter (ns)
<input type="checkbox"/>	TILE0_RE...AD_P_IN	TILE0_REFCLK_PAD_P_IN	undefined	undefined			
<input type="checkbox"/>	TILE1_RE...AD_P_IN	TILE1_REFCLK_PAD_P_IN	undefined	undefined			
<input type="checkbox"/>	TILE2_RE...AD_P_IN	TILE2_REFCLK_PAD_P_IN	undefined	undefined			
<input type="checkbox"/>	TILE3_RE...AD_P_IN	TILE3_REFCLK_PAD_P_IN	undefined	undefined			

Figure 11: Clock Sources with Missing Clock Definitions

You will fill in the periods for the five missing primary clocks in the design. The second category of clocks, shown in the Constraints for Pulse Width Check Only table, is optional. For this example, do not add these last constraints.

- In the Recommended Constraints table, each row of the wizard is a missing constraint. To specify a constraint in the table, click the cell in the period column for the clock and type the value from [Table 1](#) to fill in the periods of the five missing primary clocks in the design. When you set the period for a clock, the frequency is automatically populated.

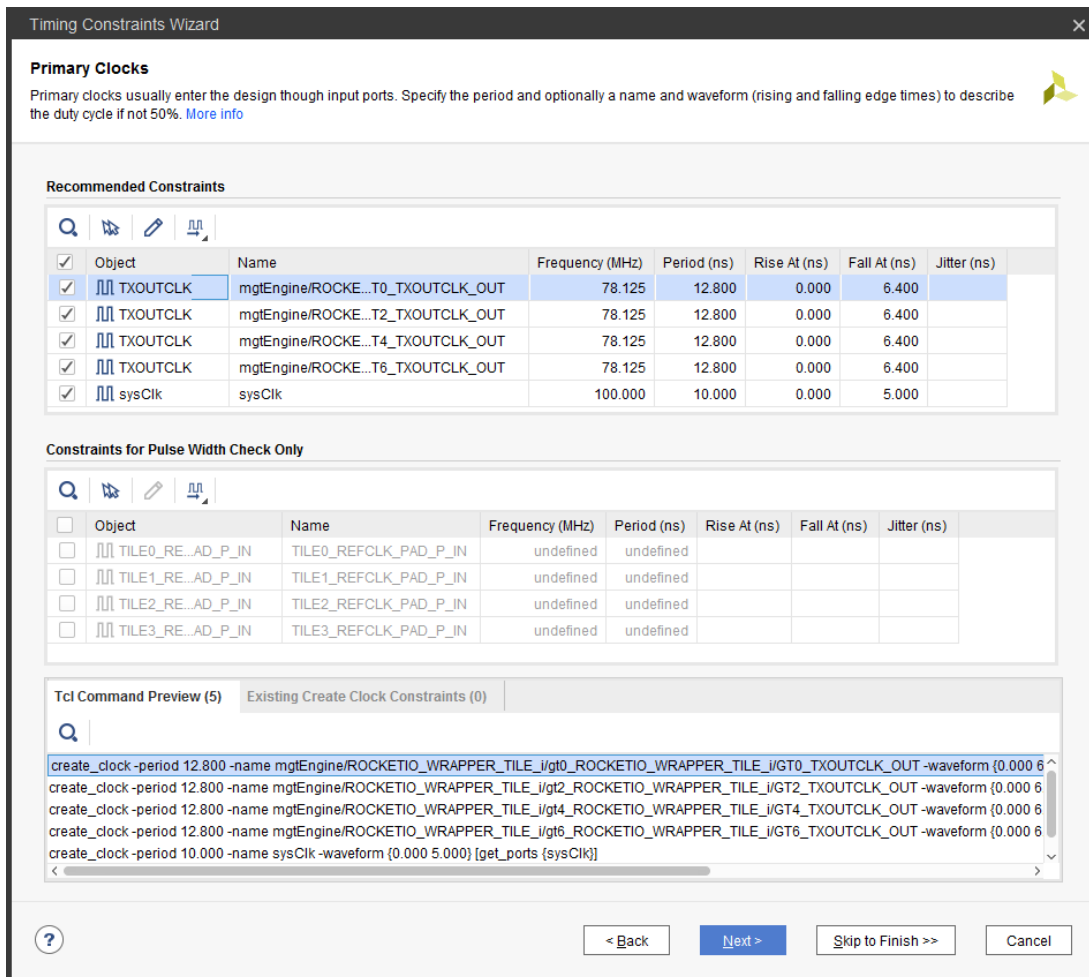
Table 1: Values to Use on the Primary Clock Page of the Wizard

Primary Clock	Period (ns)
mgtEngine/ROCKETIO_WRAPPER_i/gt0_ROCKETIO_WRAPPER_TILE_i/GT0_TXOUTCLK_OUT	12.8
mgtEngine/ROCKETIO_WRAPPER_i/gt0_ROCKETIO_WRAPPER_TILE_i/GT2_TXOUTCLK_OUT	12.8
mgtEngine/ROCKETIO_WRAPPER_i/gt0_ROCKETIO_WRAPPER_TILE_i/GT4_TXOUTCLK_OUT	12.8
mgtEngine/ROCKETIO_WRAPPER_i/gt0_ROCKETIO_WRAPPER_TILE_i/GT6_TXOUTCLK_OUT	12.8
sysClk	10.0

If you do not want to enter a constraint for a specific clock, uncheck the box next to the clock.

For more information about how the wizard finds these missing constraints, click the Quick Help button (“?”) in the lower left-hand corner of the wizard. The quick help pages are context specific and contain more information about the topologies the wizard is looking for and an explanation as to why the constraint is being suggested.

The completed page looks like the following figure.


Figure 12: Completed Primary Clocks Page of the Timing Constraints Wizard

5. Click **Next** to continue.

The primary clock constraints have been added to the design. Next, the wizard looks for unconstrained generated clocks. Generated clocks are derived from primary clocks in the FPGA fabric. A good example would be a binary counter used to create a divided clock.

In this design, the wizard determined that there are no unconstrained generated clocks.

6. Click **Next** to continue.

Next, the wizard looks for forwarded clocks. A forwarded clock is a generated clock on a primary output port of the FPGA. These are commonly used for source synchronous buses when the capture clock travels with the data.

The wizard has determined that there are no unconstrained forwarded clocks in the design.

7. Click **Next** to continue.

Next, the wizard looks for external feedback delays. MMCM or PLL feedback delay outside the FPGA is used to compute the clock delay compensation in the timing reports.

The wizard did not find any unconstrained MMCM external feedback delays in the design.

8. Click **Next** to continue.

Next, the wizard looks at the input delays. The following figure shows the Input Delay page of the Timing Constraints wizard. There are three sections to the page.

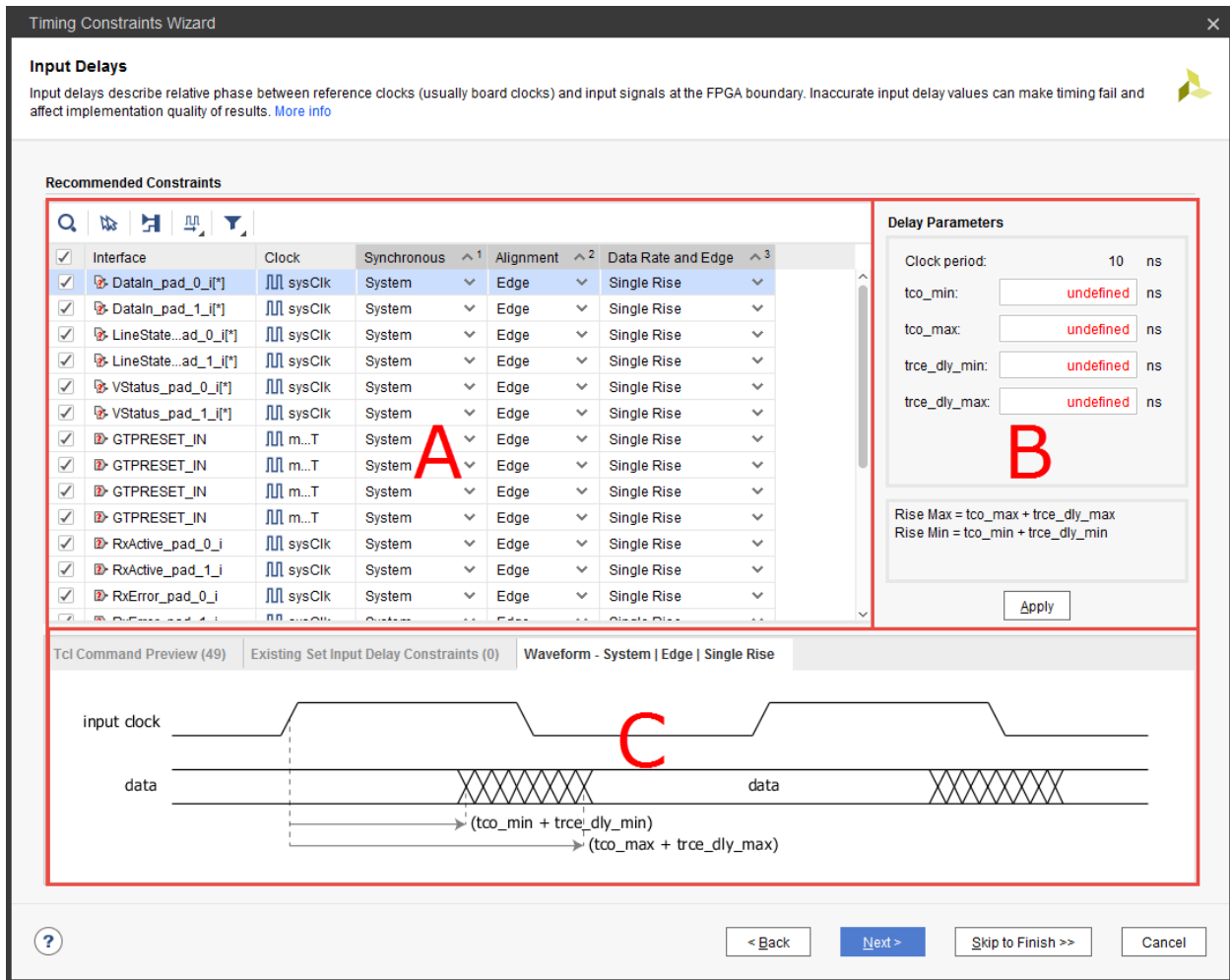


Figure 13: Input Delay Page of Timing Constraints Wizard Showing the Major Sections

In section A, you can see all the input ports that are missing input delay constraints in the design. In this table, you select the timing template you would like to use to constrain the input.

In section B, you provide the delay values for the template. This section will change depending on the template chosen in section A.

In section C, there are three tabs:

- **Tcl Command Preview** previews the Tcl commands that will be used to constrain the design.
- **Existing Set Input Delay Constraints** shows input delay constraints that exist in the design.
- **Waveform** displays the waveform associated with the template.

Next, you will fill out the form based on [Table 2](#).

1. Click the **Clock** column header to sort the table alphabetically by clock name.
2. Select the template in section A, enter the values in section B, and observe the Tcl commands, existing input delays, and the template specific waveform in section C.

Skip entering the first four constraints shown in [Table 2](#) by unchecking the box to the left of the constraint. In this particular case, you false path these paths from the GTPRESET_IN port later, as it is an asynchronous reset signal synchronized inside the design.

The blocks of colored rows in [Table 2](#) can all be entered at the same time in the Input Delays page of the Timing Constraints wizard, shown in [Figure 14, page 21](#), by selecting multiple rows in the wizard (use the **Shift** or **Ctrl** buttons and click to select multiple rows) and then entering the values once. Some inputs are constrained relative to virtual clocks, since they are captured by an internal generated clock with a waveform different than the board clock. In this case, the wizard creates a virtual clock with the same frequency and waveform as the internal clock, and recommends a constraint relative to the virtual clock.

[Table 2](#) is shaded to indicate which groups of signals can be entered in this manner.

Table 2: Input Constraint Values

Interface	Clock	Synchronous	Alignment	Data Rate and Edge	tco_min (ns)	tco_max (ns)	trce_dly_min (ns)	trce_dly_max (ns)
GTPRESET_IN	mgtEngine/...	System	Edge	Single Rise	Uncheck constraint – will false path later			
GTPRESET_IN	mgtEngine/...	System	Edge	Single Rise	Uncheck constraint – will false path later			
GTPRESET_IN	mgtEngine/...	System	Edge	Single Rise	Uncheck constraint – will false path later			
GTPRESET_IN	mgtEngine/...	System	Edge	Single Rise	Uncheck constraint – will false path later			
DataIn_pad_0_i[*]	sysClk	System	Edge	Single Rise	1	2	1	1
DataIn_pad_1_i[*]	sysClk	System	Edge	Single Rise	1	2	1	1
LineState_pad_0_i[*]	sysClk	System	Edge	Single Rise	1	2	1	1
LineState_pad_1_i[*]	sysClk	System	Edge	Single Rise	1	2	1	1
VStatus_pad_0_i[*]	sysClk	System	Edge	Single Rise	1	2	1	1
VStatus_pad_1_i[*]	sysClk	System	Edge	Single Rise	1	2	1	1
RxActive_pad_0_i	sysClk	System	Edge	Single Rise	1	2	1	1
RxActive_pad_1_i	sysClk	System	Edge	Single Rise	1	2	1	1
Rx_Error_pad_0_i	sysClk	System	Edge	Single Rise	1	2	1	1
Rx_Error_pad_1_i	sysClk	System	Edge	Single Rise	1	2	1	1
Rx_Valid_pad_0_i	sysClk	System	Edge	Single Rise	1	2	1	1
Rx_Valid_pad_1_i	sysClk	System	Edge	Single Rise	1	2	1	1
TxReady_pad_0_i	sysClk	System	Edge	Single Rise	1	2	1	1
TxReady_pad_1_i	sysClk	System	Edge	Single Rise	1	2	1	1
usb_vbus_paf_0_i	sysClk	System	Edge	Single Rise	1	2	1	1
usb_vbus_paf_1_i	sysClk	System	Edge	Single Rise	1	2	1	1
or1200_clmode	VIRTUAL_cpuClk_5	System	Edge	Single Rise	0.1	2.5	0.1	0.2
or1200_pic_ints	VIRTUAL_cpuClk_5	System	Edge	Single Rise	0.1	2.5	0.1	0.2
reset	VIRTUAL_cpuCLK_5	System	Edge	Single Rise	0.1	2.5	0.1	0.2

- The following figure shows the completed input delay page. Note the four constraints being skipped.

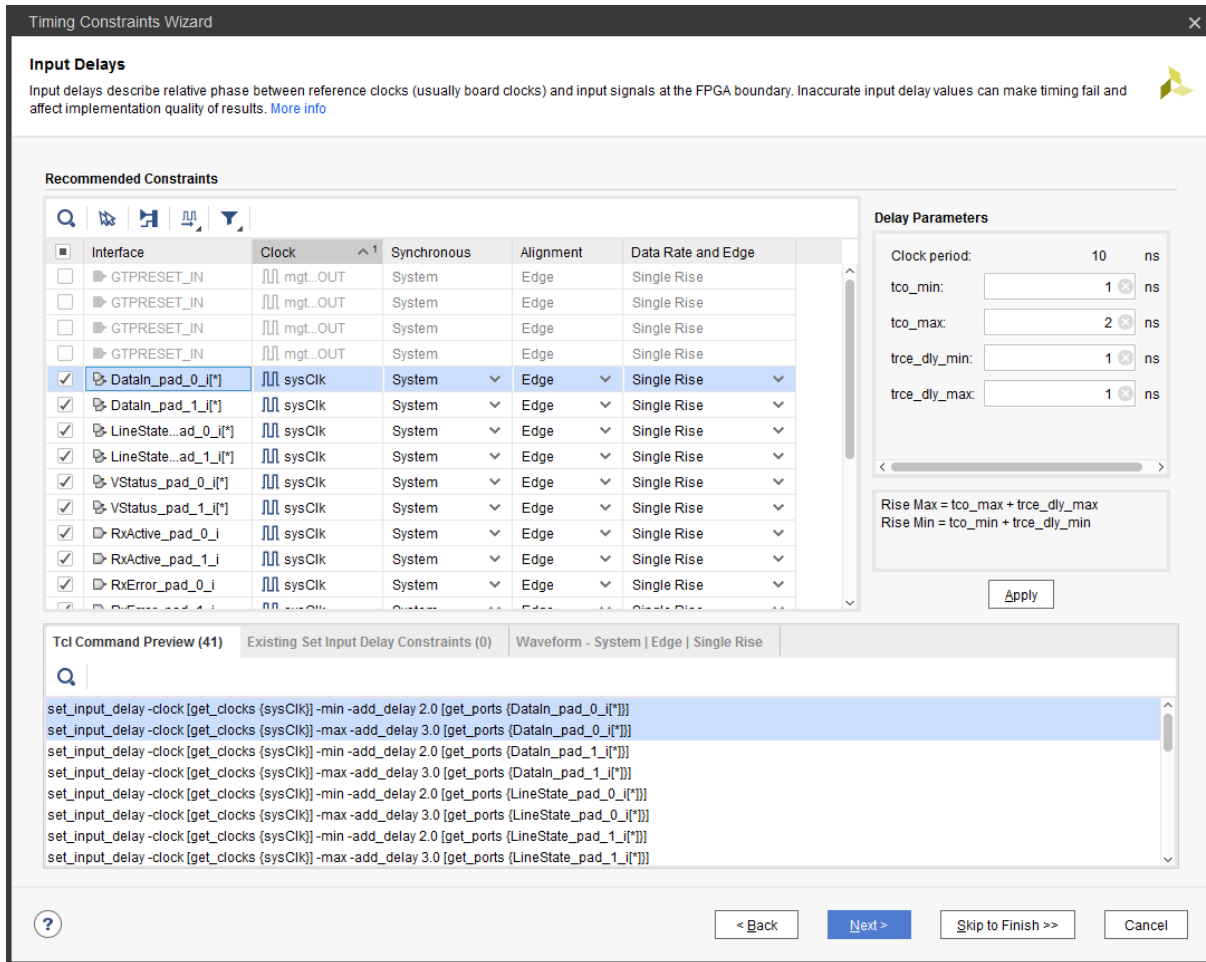


Figure 14: Completed Inputs Page of the Timing Constraints Wizard

- When you have successfully entered all the input constraint values, click **Next**.

The Output Delays page of the wizard displays all the outputs that are unconstrained in the design. The page layout is very similar to the inputs page.

- In the Output Delays page, click the **Clock** header to sort the table alphabetically by clock name.
- Use [Table 3](#) below to constrain all the outputs as you did for the input constraint values. You can select multiple lines in the wizard at once and edit several entries at the same time.

Table 3: Output Constraint Values

Interface	Clock	Synchronous	Alignment	Data Rate and Edge	tsu (ns)	thd (ns)	trce_dly_max (ns)	trce_dly_min (ns)
OpMode_pad_0_o[*]	sysClk	System	Setup/Hold	Single Rise	1.0	0.1	0.1	0.1
OpMode_pad_1_o[*]	sysClk	System	Setup/Hold	Single Rise	1.0	0.1	0.1	0.1
VControl_pad_0_o[*]	sysClk	System	Setup/Hold	Single Rise	1.0	0.1	0.1	0.1
VControl_pad_1_o[*]	sysClk	System	Setup/Hold	Single Rise	1.0	0.1	0.1	0.1
SuspendM_pad_0_o	sysClk	System	Setup/Hold	Single Rise	1.0	0.1	0.1	0.1
SuspendM_pad_1_o	sysClk	System	Setup/Hold	Single Rise	1.0	0.1	0.1	0.1
TermSel_pad_0_o	sysClk	System	Setup/Hold	Single Rise	1.0	0.1	0.1	0.1
TermSel_pad_1_o	sysClk	System	Setup/Hold	Single Rise	1.0	0.1	0.1	0.1
TxValid_pad_0_o	sysClk	System	Setup/Hold	Single Rise	1.0	0.1	0.1	0.1
TxValid_pad_1_o	sysClk	System	Setup/Hold	Single Rise	1.0	0.1	0.1	0.1
VControl_Load_pad_0_o	sysClk	System	Setup/Hold	Single Rise	1.0	0.1	0.1	0.1
VControl_Load_pad_1_o	sysClk	System	Setup/Hold	Single Rise	1.0	0.1	0.1	0.1
XcvSelect_pad_0_o	sysClk	System	Setup/Hold	Single Rise	1.0	0.1	0.1	0.1
XcvSelect_pad_1_o	sysClk	System	Setup/Hold	Single Rise	1.0	0.1	0.1	0.1
phy_rst_pad_0_o	sysClk	System	Setup/Hold	Single Rise	1.0	0.1	0.1	0.1
phy_rst_pad_1_o	sysClk	System	Setup/Hold	Single Rise	1.0	0.1	0.1	0.1
DataOut_pad_0_o[*]	VIRTUAL_wbClk_4	System	Setup/Hold	Single Rise	2.1	0.6	0.1	0.0
DataOut_pad_1_o[*]	VIRTUAL_wbClk_4	System	Setup/Hold	Single Rise	2.1	0.6	0.1	0.0
Or1200_pm_out[*]	VIRTUAL_wbClk_4	System	Setup/Hold	Single Rise	2.1	0.6	0.1	0.0

7. Click **Next** to continue.

The wizard looks for any unconstrained combinational paths through the design. A combinational path is a path that traverses the FPGA without being captured by any sequential elements. This design does not contain any combinational paths.

8. Click **Next** to continue.

Physically exclusive clock groups are clocks that do not exist in the design at the same time. There are no unconstrained physically exclusive clock groups in this design.

9. Click **Next** to continue.

Logically exclusive clocks with no interaction are clocks that are active at the same time except on shared clock tree sections. Then these clocks do not have logical paths between each other and outside the shared sections, they are logically exclusive. There are no unconstrained logically exclusive clock groups with no interaction in the design.

10. Click **Next** to continue.

Logically exclusive clocks with interaction are clocks that are active at the same time except on shared clock tree sections. When these clocks have logical paths between each other, only the clocks limited to the shared clock tree sections are logically exclusive and are therefore constrained differently than the logically exclusive clock with no interaction. There are no unconstrained logically exclusive clock groups with interaction in the design.

11. Click **Next** to continue.

The Asynchronous Clock Domain Crossings page recommends constraints for safe clock domain crossings. This design does not contain any unconstrained clock domain crossings.

12. Click **Next** to continue.

The following figure shows the final page of the Timing Constraints wizard. All the constraints that were generated by the wizard can be viewed by clicking the links. If you would like to run any reports once the wizard is finished, you can select them using the check boxes in the wizard.

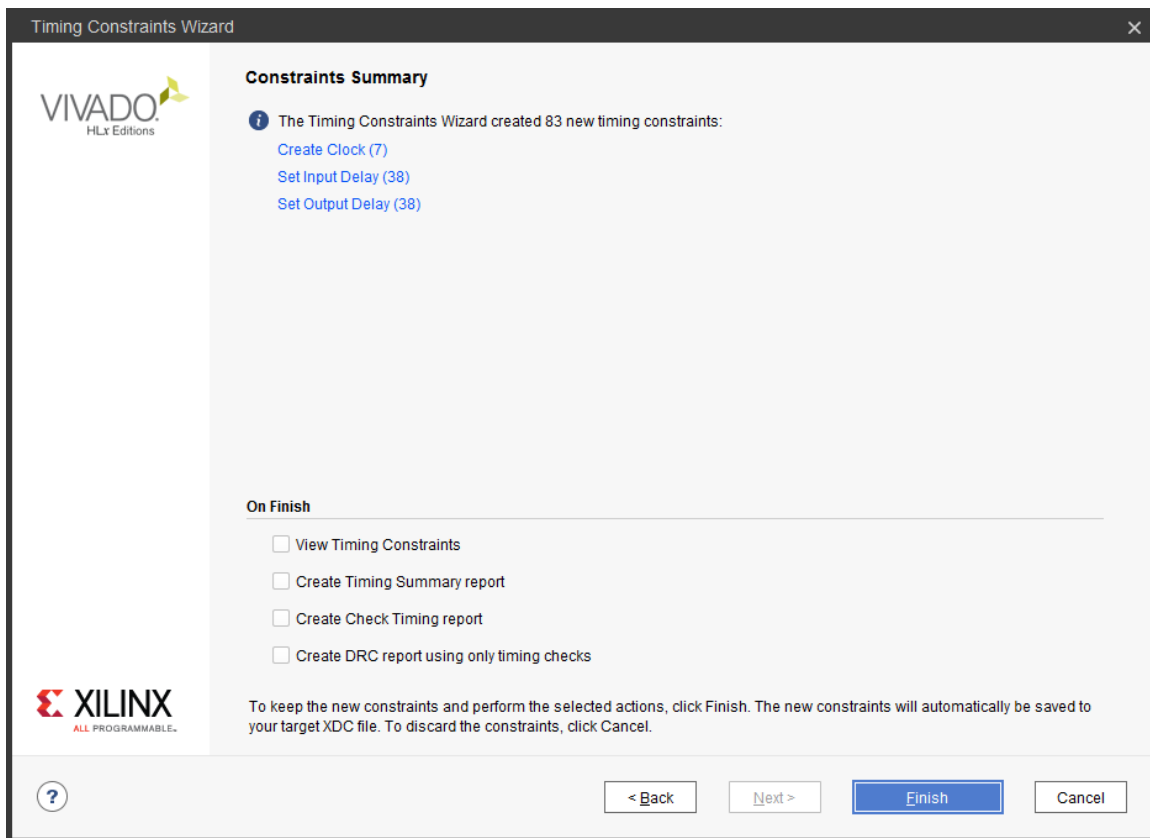


Figure 15: Timing Constraints Wizard Summary Page

13. Click **Finish** to complete the Timing Constraints wizard.

Step 4: Using the Constraints Editor

1. Click **Edit Timing Constraints** from the Flow Navigator under the Synthesized Design section. The Vivado IDE displays the Timing Constraints window.

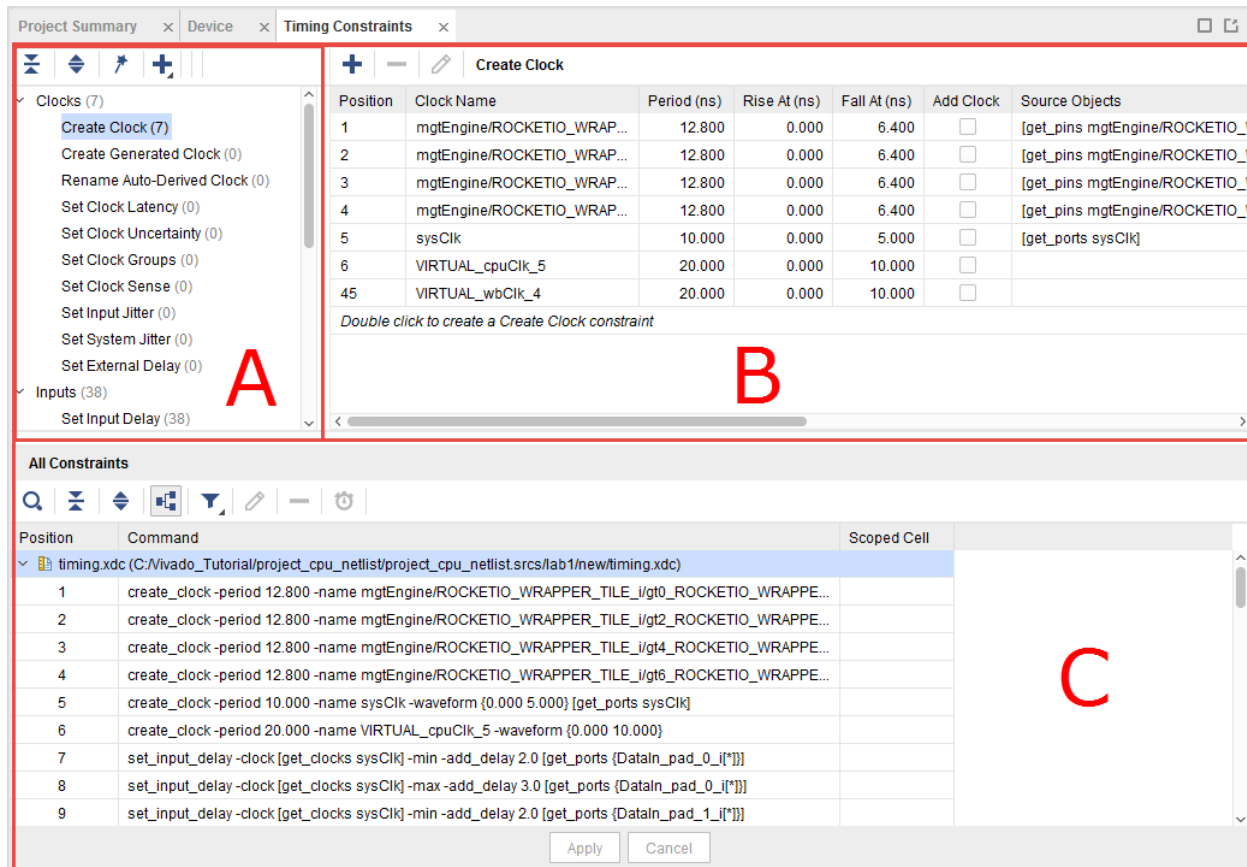


Figure 16: Timing Constraints Window

There are three sections to the Timing Constraints window, as shown in the following figure:

- **Constraints tree view** is labeled as section “A.” This section displays standard timing constraints, grouped by category. Double-clicking a constraint in this section opens a form to help you define the selected constraint.
- **Constraints Spreadsheet** is labeled as section “B.” This section displays timing constraints of the type currently selected in the Constraints tree view. If you prefer, you can use this to directly define or edit constraints instead of using the Constraints wizard.
- **All Constraints** is labeled as section “C.” This section displays all the timing constraints that currently exist in the design.

The Timing Constraints wizard identifies missing clocks, I/O delays, and clock domain crossings exceptions, but it does not handle general timing exceptions. You are going to use the timing constraints editor to create the exceptions that exist in this design.

First, you are going to set a false path on the `GTPRESET_IN` input. This is the input constraint that you skipped by unchecking it on the input delay page of the Timing Constraints wizard. The `GTPRESET_IN` signal is an asynchronous reset that is properly synchronized inside the design. For more information about false paths, see [this link](#) in the *Vivado Design Suite User Guide: Using Constraints* (UG903).

2. In the Constraints tree view, scroll down to the Exceptions category, shown in the following figure.
3. Double-click **Set False Path**.

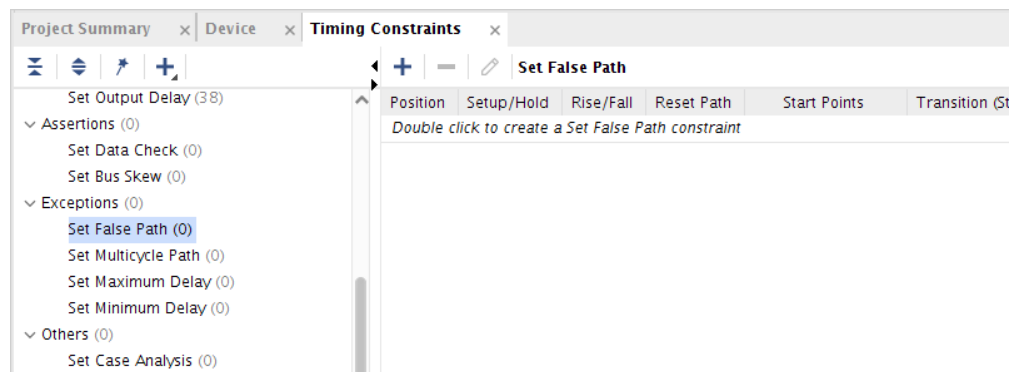


Figure 17: Set False Path Section in the Constraints Editor

4. To the right of the **From** text box, click the **Choose Start Points**  button.

The **Specify Start Points** dialog box appears.

5. From the **Find names of type** drop-down list, select **I/O Ports** as shown in [Figure 18, page 26](#).
6. Under Options, select "Name," "contains," and in the search pattern text box, enter `GTPRESET_IN`.
7. Click the **Find** button.

- Select **GTPRESET_IN** in the found results text box and press the right arrow to move it to the selected names text box.



TIP: You can also double-click **GTPRESET_IN** to move it from the **Find results** list to the **Selected names** list.

Notice that the Command field displayed at the bottom of the dialog box changes as you perform these different actions. The `get_ports` command changes to:

```
get_ports "*GTPRESET_IN"
```

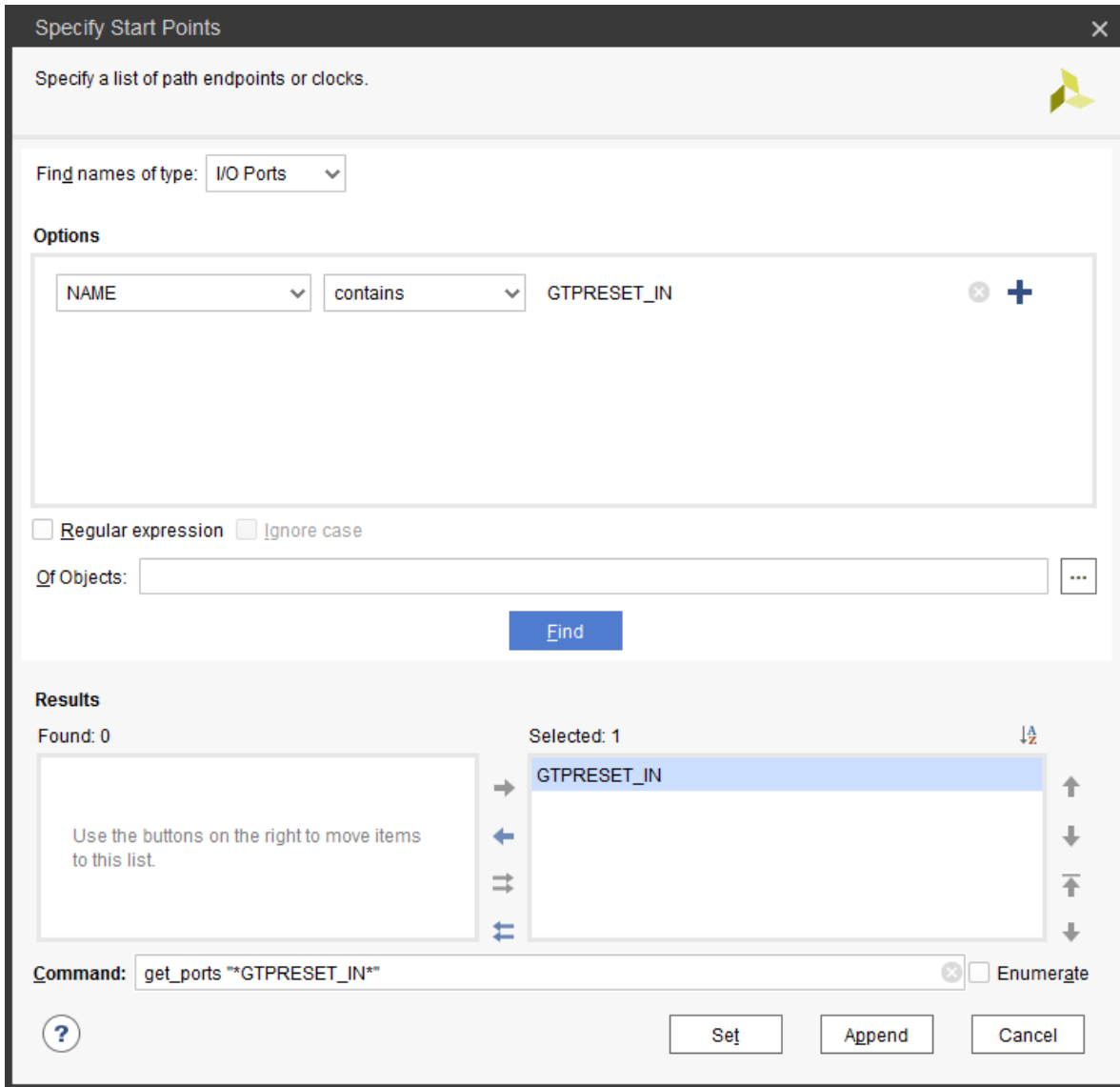


Figure 18: Choose Start Points Window for set_false_path Dialog Box

- Click **Set** in the Specify Start Points dialog box.

The completed Set False Path dialog box is shown in the following figure. Notice the following command text in the **Command** field at the bottom of the dialog box:

```
set_false_path -from [get_ports "*GTPRESET_IN*"]
```

The Vivado IDE displays the Tcl command form of all constraints created via the dialogs for your review. This is useful for learning the Tcl command syntax, and for verifying the final constraint before adding it.

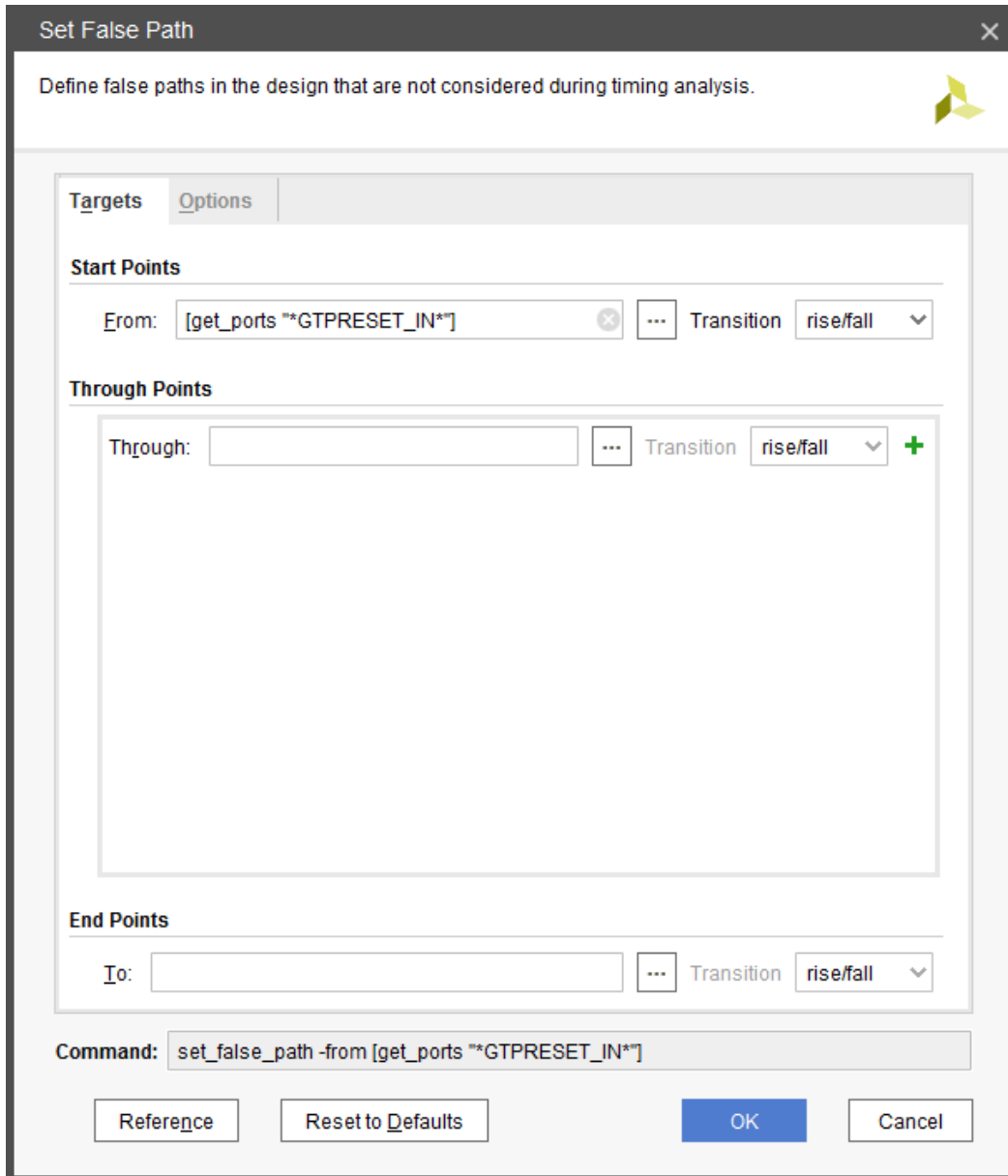


Figure 19: Completed set_false_path Constraint Window

10. Click **OK** to close the Timing Constraint Editor.

Vivado creates the false path exception.

Add a MultiCycle Path

Next, you will add a multicycle path using the constraints editor.

1. Double-click on **Set Multicycle Path** under the Exceptions category of the tree.
2. In the Set Multicycle Path dialog box, set the path multiplier to **2**.
3. In the **Through** entry box, type the following string (alternately, you can copy and paste it from here):

```
[get_pins cpuEngine/or1200_cpu/or1200_alu/*]
```

Notice that the Tcl command displays in the **Command** field.

4. Click **OK**.

A new multicycle path is added to the constraints editor in the **<unsaved_constraints>** section, as shown in the following figure.

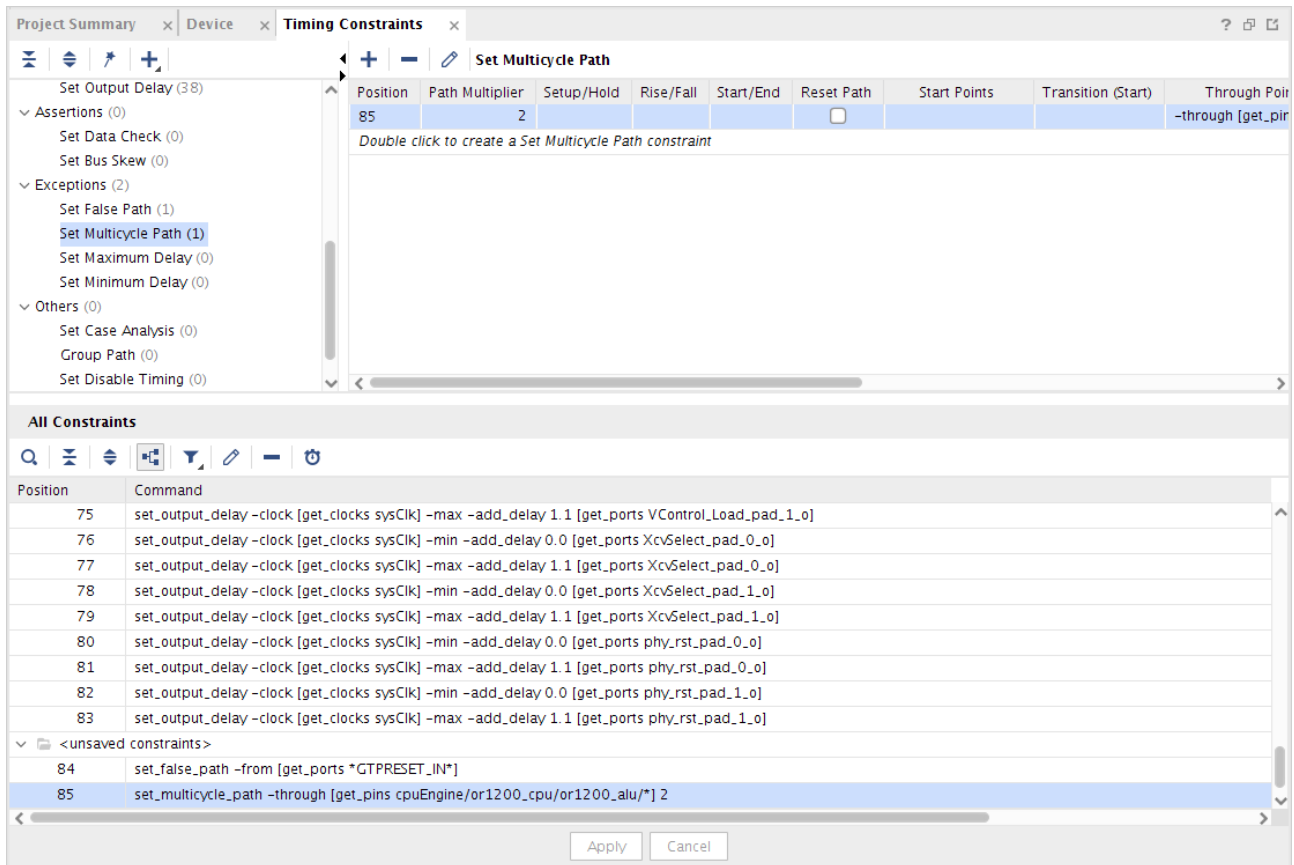


Figure 20: New Multicycle Path Added to the Constraints Editor

Adding a multicycle path by default pushes the setup timing to the specified number of cycles (N), *but it also pushes the hold timing to $N - 1$ cycles*. This is usually not what is intended and could cause Vivado tools to spend a lot of time fixing large hold violations. In this case we want the setup path to be timed to two cycles of the clock, but we want the hold path to be timed to zero cycles of the clock. To achieve this, we need to define another multicycle path on the hold edge to 1, such that $N - 1$ is zero. For more information about this situation, see [this link](#) in the *Vivado Design Suite User Guide: Using Constraints (UG903)*.

5. Double-click **Set Multicycle Path** under the Exceptions category of the tree for a second time.
Note that all the fields you entered previously are still filled in.
6. In the Set Multicycle Path dialog box, change the **Path Multiplier** to **1**.
7. Select the **Options** tab.
8. Under Setup/Hold, select the check box that says **Use path multiplier**.
9. Use the pull-down to select **hold (minimum delay)**.

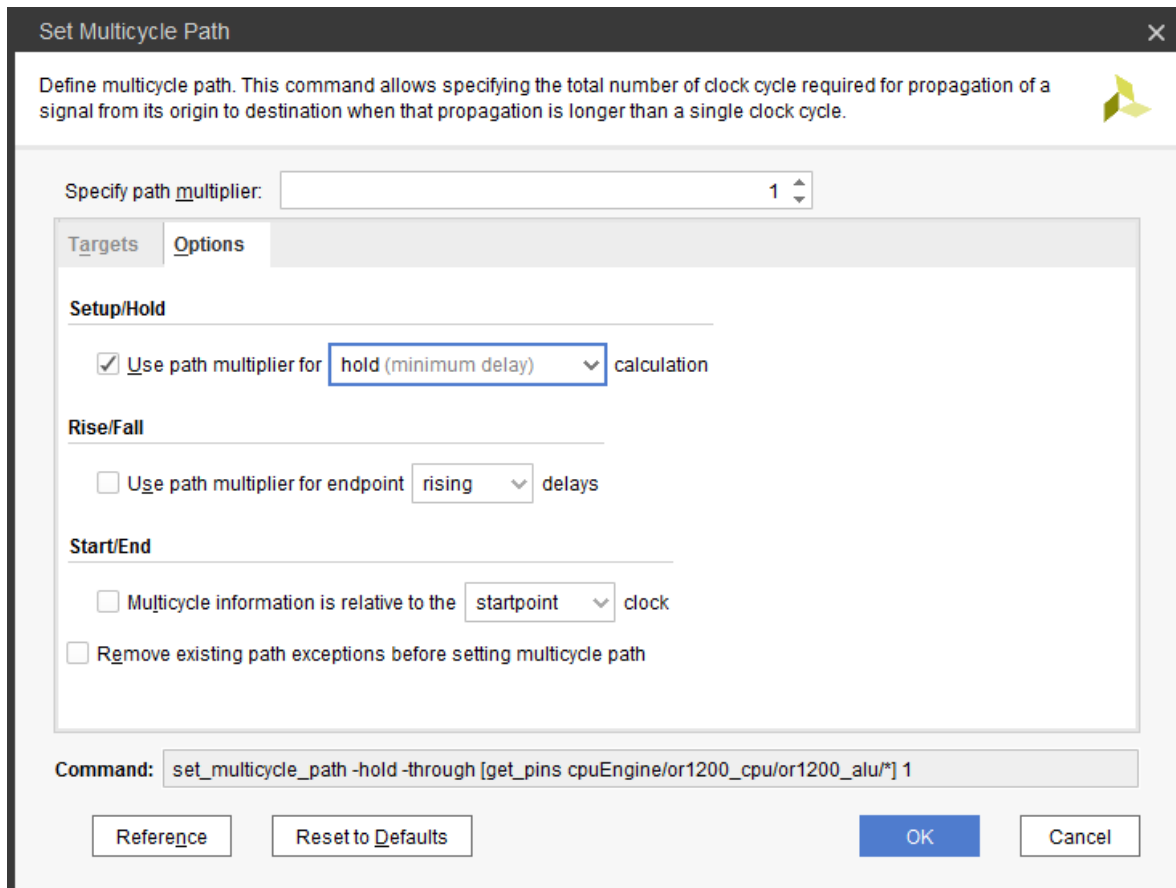


Figure 21: Set Multicycle Path – Options Tab

10. Click **OK**.

We now have a fully constrained design in memory. To save the constraints to disk, proceed to Step 5: Saving Constraints.

Step 5: Saving Constraints

Constraint management is an important step of the design flow, and the Vivado Design Suite provides you the flexibility of adding new constraints into an existing constraint file, overwriting existing constraints, or creating a new constraints file to track design changes or complete missing constraints.

You have created a few timing exceptions for the design, but the exceptions exist only in memory and not on disk yet. You need to save the exceptions to the `timing.xdc` file.

1. From the Sources window in Vivado, double-click `timing.xdc` under **Constraints > lab1**.
2. Scroll to the bottom of the file and notice that the `set_false_path` and `set_multicycle_path` constraints do not exist in the file. This is also reflected in the Timing Constraints Editor as `<unsaved constraints>`, as shown in the following figure.

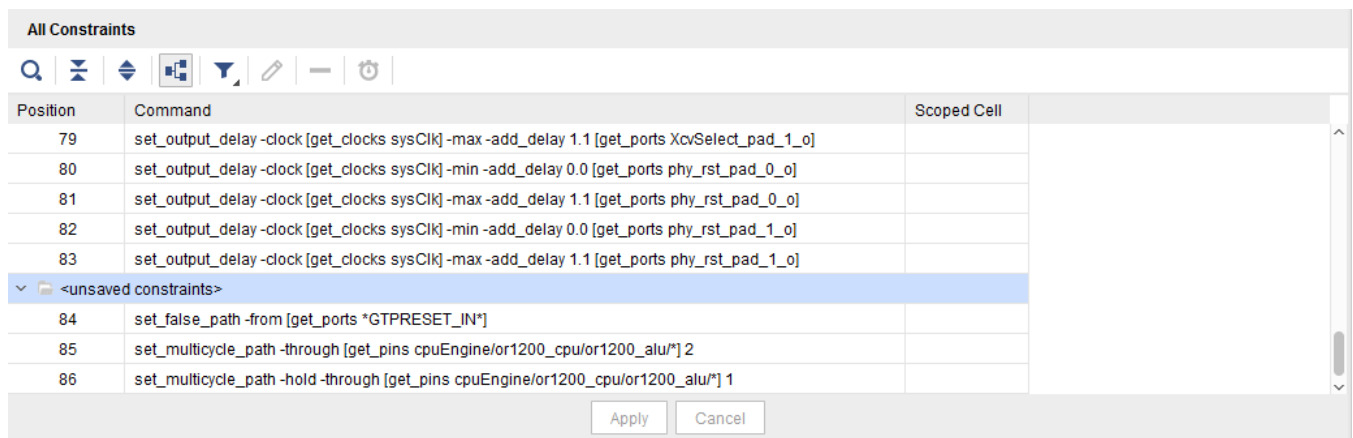



Figure 22: Unsaved Constraints Displayed in the Constraints Editor.

3. Click the **Save Constraints** button  or use the **File > Constraints > Save As** command from the main menu.

- Click the **Reload** link in the banner of the **timing.xdc** tab to reload the constraints file from disk. Notice that the false path and multi-cycle paths are now visible in the `timing.xdc` text file, as shown in the following figure.

```

56 set_output_delay -clock [get_clocks sysClk] -min -add_delay 0.000 [get_ports {VControl_pad_l_o[*]}]
57 set_output_delay -clock [get_clocks sysClk] -max -add_delay 1.100 [get_ports {VControl_pad_l_o[*]}]
58 set_output_delay -clock [get_clocks VIRTUAL_wbClk_4] -min -add_delay -0.600 [get_ports {ori200_pm_out[*]}]
59 set_output_delay -clock [get_clocks VIRTUAL_wbClk_4] -max -add_delay 2.200 [get_ports {ori200_pm_out[*]}]
60 set_output_delay -clock [get_clocks sysClk] -min -add_delay 0.000 [get_ports SuspendM_pad_0_o]
61 set_output_delay -clock [get_clocks sysClk] -max -add_delay 1.100 [get_ports SuspendM_pad_0_o]
62 set_output_delay -clock [get_clocks sysClk] -min -add_delay 0.000 [get_ports SuspendM_pad_l_o]
63 set_output_delay -clock [get_clocks sysClk] -max -add_delay 1.100 [get_ports SuspendM_pad_l_o]
64 set_output_delay -clock [get_clocks sysClk] -min -add_delay 0.000 [get_ports TermSel_pad_0_o]
65 set_output_delay -clock [get_clocks sysClk] -max -add_delay 1.100 [get_ports TermSel_pad_0_o]
66 set_output_delay -clock [get_clocks sysClk] -min -add_delay 0.000 [get_ports TermSel_pad_l_o]
67 set_output_delay -clock [get_clocks sysClk] -max -add_delay 1.100 [get_ports TermSel_pad_l_o]
68 set_output_delay -clock [get_clocks sysClk] -min -add_delay 0.000 [get_ports TxValid_pad_0_o]
69 set_output_delay -clock [get_clocks sysClk] -max -add_delay 1.100 [get_ports TxValid_pad_0_o]
70 set_output_delay -clock [get_clocks sysClk] -min -add_delay 0.000 [get_ports TxValid_pad_l_o]
71 set_output_delay -clock [get_clocks sysClk] -max -add_delay 1.100 [get_ports TxValid_pad_l_o]
72 set_output_delay -clock [get_clocks sysClk] -min -add_delay 0.000 [get_ports VControl_Load_pad_0_o]
73 set_output_delay -clock [get_clocks sysClk] -max -add_delay 1.100 [get_ports VControl_Load_pad_0_o]
74 set_output_delay -clock [get_clocks sysClk] -min -add_delay 0.000 [get_ports VControl_Load_pad_l_o]
75 set_output_delay -clock [get_clocks sysClk] -max -add_delay 1.100 [get_ports VControl_Load_pad_l_o]
76 set_output_delay -clock [get_clocks sysClk] -min -add_delay 0.000 [get_ports XcvSelect_pad_0_o]
77 set_output_delay -clock [get_clocks sysClk] -max -add_delay 1.100 [get_ports XcvSelect_pad_0_o]
78 set_output_delay -clock [get_clocks sysClk] -min -add_delay 0.000 [get_ports XcvSelect_pad_l_o]
79 set_output_delay -clock [get_clocks sysClk] -max -add_delay 1.100 [get_ports XcvSelect_pad_l_o]
80 set_output_delay -clock [get_clocks sysClk] -min -add_delay 0.000 [get_ports phy_rst_pad_0_o]
81 set_output_delay -clock [get_clocks sysClk] -max -add_delay 1.100 [get_ports phy_rst_pad_0_o]
82 set_output_delay -clock [get_clocks sysClk] -min -add_delay 0.000 [get_ports phy_rst_pad_l_o]
83 set_output_delay -clock [get_clocks sysClk] -max -add_delay 1.100 [get_ports phy_rst_pad_l_o]
84 set_false_path -from [get_ports *GTPRESET_IN*]
85 set_multicycle_path -through [get_pins cpuEngine/ori200_cpu/ori200_alu/*] 2
86 set_multicycle_path -hold -through [get_pins cpuEngine/ori200_cpu/ori200_alu/*] 1
87
    
```

Figure 23: timing.xdc Tab

Step 6: Clock Interaction Report

After or during constraints creation, you must verify that the constraints are complete and safe. Vivado Design Suite times all clocks together by default unless you specify otherwise by defining clock groups or other timing exceptions. The `set_clock_groups` command specifies asynchronous or exclusive clock domains and disables timing analysis between them. You can also use the `set_false_path` exception between two clocks to disable timing on all paths between them, or use it on specific netlist objects to only disable some paths. The `set_multicycle_path` exception modifies the clock edges used during timing analysis instead of the default single cycle assumption. For more information on using these constraints, see the *Vivado Design Suite User Guide: Using Constraints* ([UG903](#)).

Vivado automatically infers timing path requirements for paths that cross between two different clock domains, called inter-clock paths, making assumptions regarding phase and offset. The Report Clock Interaction command reports inter-clock paths, to help identify potential problems such as unrealistic setup or hold requirements between two clocks, or unsafe timing between asynchronous clocks (no known phase relationship) which can lead to unstable hardware behavior.

1. From the Flow Navigator, select **Synthesized Design > Report Clock Interaction** and click **OK** in the Report Clock Interaction dialog box to accept the default settings.

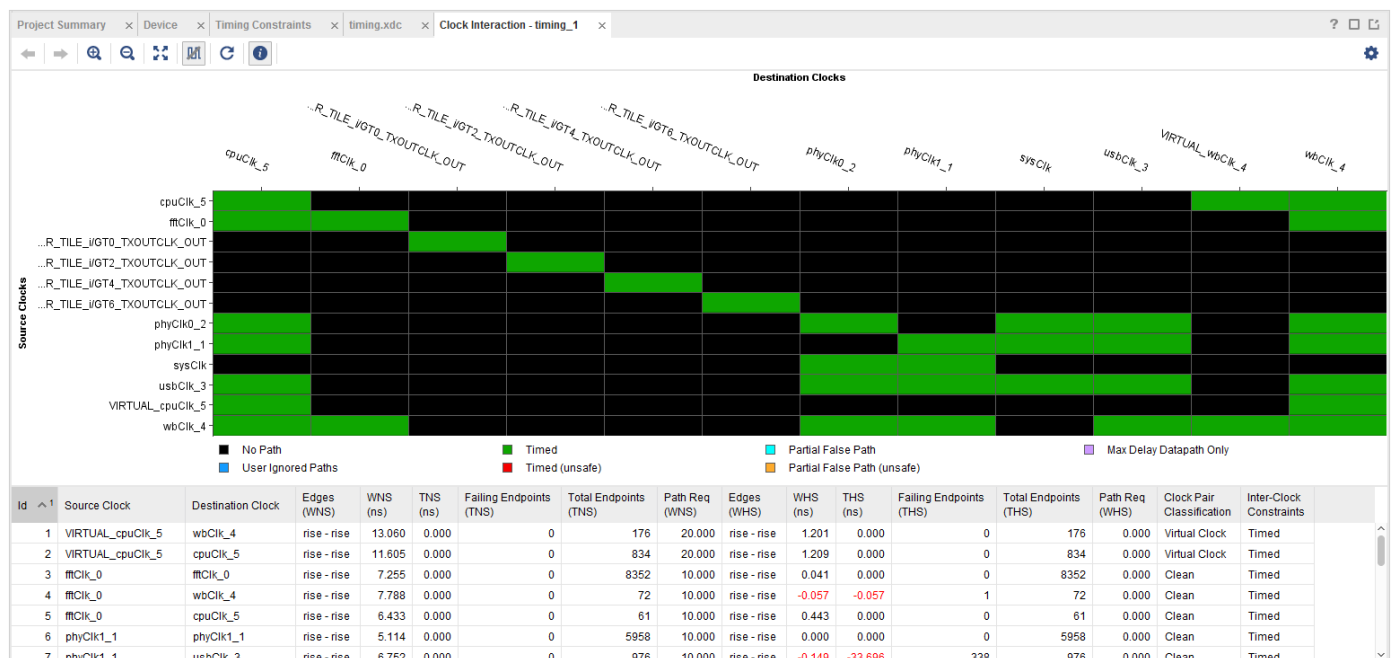


Figure 24: Clock Interaction Report

The Vivado IDE generates a graphical matrix illustrating the relationship of the various clocks in the design, as shown in the previous figure. For this design, the primary clock (`sysClk`) connects to an MMCM, which generates six additional clocks. The clock interactions shown are between these generated clocks. In addition, the Timing Constraints wizard created additional generated clocks and virtual clocks to fully constrain the design.

In general, the Clock Interaction report shows clock pairs with no path between them (black), with paths safely timed (green and light blue), with paths not safely timed (red and orange) and with paths covered by Max Delay Datapath Only constraints. In this design, only black cells and green cells are displayed in the matrix.



Important! Green in the matrix does not mean that timing is met, it simply means that the timing constraints and the clock tree topologies allows safe timing analysis and accurate slack computation.

In the Clock Interaction report, unsafe means there is no common primary clock (no known phase relationship), or no common node (uncommon scenario that results in unknown phase relationship), or no common clock period within the first 1000 clock cycles of the source and destination clocks. The Vivado timing engine selects edges on the launch and capture clocks based on the first 1000 cycles, but these edges might not reflect the most pessimistic analysis between the clocks.



TIP: The colors described here are the default colors. Your colors might be configured differently from those shown in [Figure 24](#).

2. Close the Clock Interaction window by clicking the **Close** button **X** in the window tab.

Step 7: Timing Summary Report

Timing paths start and end at clocked elements. Input and Output ports are not sequential elements, and by default Vivado timing analysis does not time paths to or from I/O ports in the design, unless input/output delay constraints are specified.

In this step you will generate and interpret timing reports in Vivado.

1. Select **Reports > Timing > Report Timing Summary**.
2. Click **OK** to generate the report, using the default options.

The timing summary tab opens, as shown in the following figure.

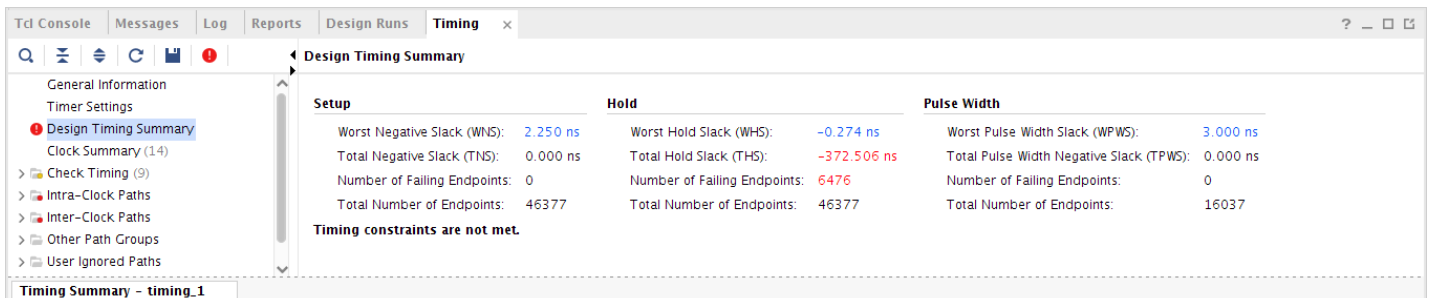


Figure 25: Report Timing Summary Results

This design passes setup timing but fails hold analysis. Before implementing the design, timing analysis uses estimated net delays that represent ideal placement. Small hold violations are common at this point of the flow and will be fixed during the routing step. For now, review the content of the report.

3. Click on the **Worst Negative Slack** link in the design timing summary section to see the worst timing path in the design, as shown in the following figure.

Name	Slack	Levels	Routes	High Fanout	From	To	Total Delay	Logic Delay	Net Delay	Requirement
Path 473	2.250	17	18	165	usbEngine1/u4/inta_reg/C	cpuEngine/or1...u_err_o_reg/D	7.406	1.583	5.823	10.0
Path 474	2.250	17	18	165	usbEngine1/u4/inta_reg/C	cpuEngine/or1...g_o_reg[0]/D	7.406	1.583	5.823	10.0
Path 475	2.250	17	18	165	usbEngine1/u4/inta_reg/C	cpuEngine/or1...g_o_reg[1]/D	7.406	1.583	5.823	10.0
Path 476	2.250	17	18	165	usbEngine1/u4/inta_reg/C	cpuEngine/or1...g_o_reg[3]/D	7.406	1.583	5.823	10.0
Path 477	2.257	17	18	165	usbEngine1/u4/inta_reg/C	cpuEngine/or1...g_o_reg[2]/D	7.399	1.583	5.816	10.0
Path 478	2.257	17	18	165	usbEngine1/u4/inta_reg/C	cpuEngine/or1...cstb_o_reg/D	7.399	1.583	5.816	10.0
Path 479	2.581	16	17	165	usbEngine1/u4/inta_reg/C	cpuEngine/or1...r_o_reg[13]/D	7.075	1.540	5.535	10.0

Figure 26: Worst Timing Path in the Design

4. When the worst path is selected, press the **F4** key to bring up its schematic. The following figure shows the worst setup path in the design.

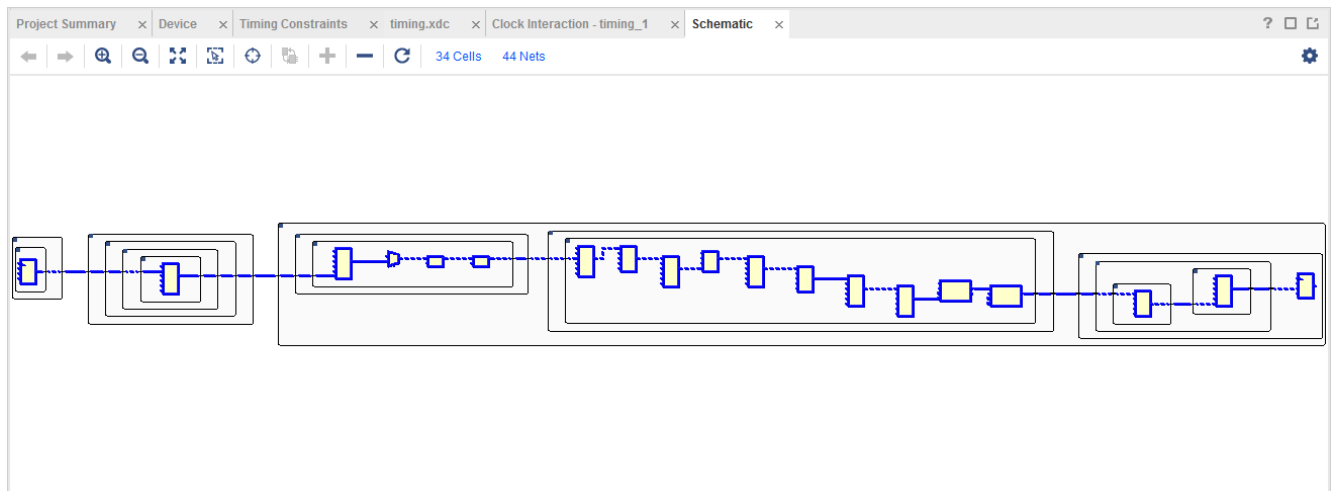


Figure 27: Schematic of Worst Setup Path in the Design

5. In the timing summary tree, select **Check Timing**.

- There are nine issues flagged by Check Timing shown in the following figure.
- Eight of these are `pulse_width_clock` checks, which were also flagged by the Timing Constraints wizard, but were not constrained. These violations have low severity because the corresponding missing clocks are not needed for timing logic paths.
- The remaining issue flagged by Check Timing is a `no_input_delay` check, which is due to a missing input constraint on the reset signal that was set to `false_path`. This can also be ignored in this example.

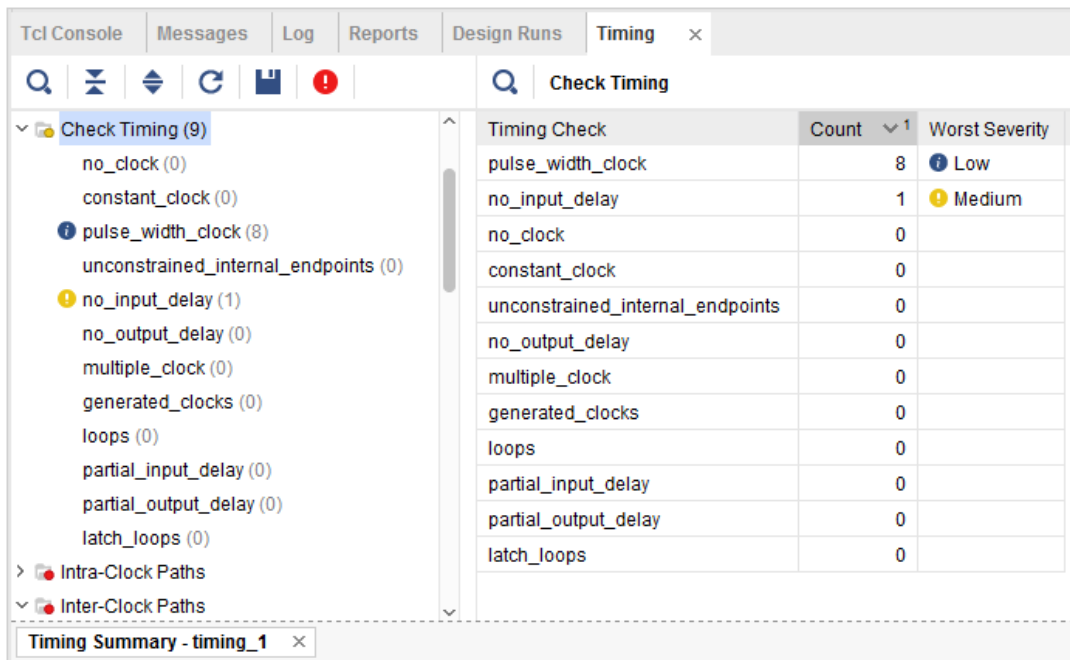


Figure 28: Check Timing Results in the Timing Summary Window

6. In the timing summary tree, select the **Clock Summary**, as shown in the following figure. The clock summary section of the timing summary report lists all the clocks in the design and shows the resulting frequencies and waveforms of each clock. The hierarchy shows the relationship between the generated clocks and the primary clock (for example, `cpuClk_5` vs. `sysClk`). For example, it shows that `cpuClk_5` is generated from primary clock `SysClk`, and its period is twice that of `sysClk`.

Name	Waveform	Period (ns)	Frequency (MHz)
VIRTUAL_cpuClk_5	{0.000 10.000}	20.000	50.000
VIRTUAL_wbClk_4	{0.000 10.000}	20.000	50.000
mgfEngine/ROCKETIO_WRAPPER_TILE_iigt0_ROCKETIO_WRAPPER_TILE_iigt0_TXOUTCLK_OUT	{0.000 6.400}	12.800	78.125
mgfEngine/ROCKETIO_WRAPPER_TILE_iigt2_ROCKETIO_WRAPPER_TILE_iigt2_TXOUTCLK_OUT	{0.000 6.400}	12.800	78.125
mgfEngine/ROCKETIO_WRAPPER_TILE_iigt4_ROCKETIO_WRAPPER_TILE_iigt4_TXOUTCLK_OUT	{0.000 6.400}	12.800	78.125
mgfEngine/ROCKETIO_WRAPPER_TILE_iigt6_ROCKETIO_WRAPPER_TILE_iigt6_TXOUTCLK_OUT	{0.000 6.400}	12.800	78.125
sysClk	{0.000 5.000}	10.000	100.000
clkfbout	{0.000 5.000}	10.000	100.000
cpuClk_5	{0.000 10.000}	20.000	50.000
fftClk_0	{0.000 5.000}	10.000	100.000
phyClk0_2	{0.000 5.000}	10.000	100.000
phyClk1_1	{0.000 5.000}	10.000	100.000
usbClk_3	{0.000 5.000}	10.000	100.000

Figure 29: Clock Summary

The remaining sections of the timing summary report group paths by their type. Each section lists the top ten paths (specified when the report was generated) in that group. These include inter-clock paths, intra-clock paths, other path groups, user ignored paths, and unconstrained paths. Clicking the roots will show a summary of the paths beneath. Expanding the tree further will ultimately display the top timing paths for each group.

Conclusion

At this point you can either continue to **Lab #2: Setting Physical Constraints**, or exit the Vivado Design Suite and continue later. Lab #2 uses the project created during this lab, so be sure not to delete your work.

In this lab, you learned:

- How to Create a constraint set and set a target constraint file
- How to add timing constraints to a design using the Timing Constraints Wizard
- How to add timing exceptions using the Timing Constraints Editor
- The importance of saving constraints to disk versus in-memory constraints
- How to generate the clock interaction report and properly interpret the resulting matrix
- How to generate the timing summary report and properly interpret the results

Lab 2: Setting Physical Constraints

Introduction

In this lab, you will create physical constraints for the CPU Netlist design, observing how actions in the GUI translate into Tcl commands. Using Tcl commands, complex operations are easily scripted for repeated use, at various stages of the flow.

Note: If you are continuing from Lab1, and your design is open, skip ahead to [Step 2: Adding Placement Constraints](#).

Step 1: Opening the Project

This lab continues from the end of Lab #1 in this tutorial. You must complete Lab #1 prior to beginning Lab #2. If you closed the tool, or closed the tutorial project at the end of Lab #1, you will need to open them again.

1. Start by loading the Vivado[®] Integrated Design Environment (IDE) by doing one of the following.
 - Launch Vivado IDE from the icon on the Windows desktop.
 - Select **Windows > Programs > Xilinx Design Tools > Vivado 2018.x > Vivado 2018.x**.
 - Type **vivado** from a command terminal.

From the Getting Started screen you can open recent projects.

2. Under **Recent Projects**, click **project_cpu_netlist** as shown in the following figure.



Figure 30: Open Recent Projects from the Getting Started Window

Step 2: Adding Placement Constraints

Explore some of the design hierarchy, and begin placing logic elements to create physical constraints.

1. From the Flow Navigator, select **Open Synthesized Design**. The synthesized design might already be open if you came directly to this step.

The synthesized netlist opens with the Device window displayed.

2. Select the **Netlist** window and expand the **clkgen** hierarchy.
3. Expand the **Leaf Cells** folder and select the instance **mmcm_adv_inst** (MMCME2_ADV).

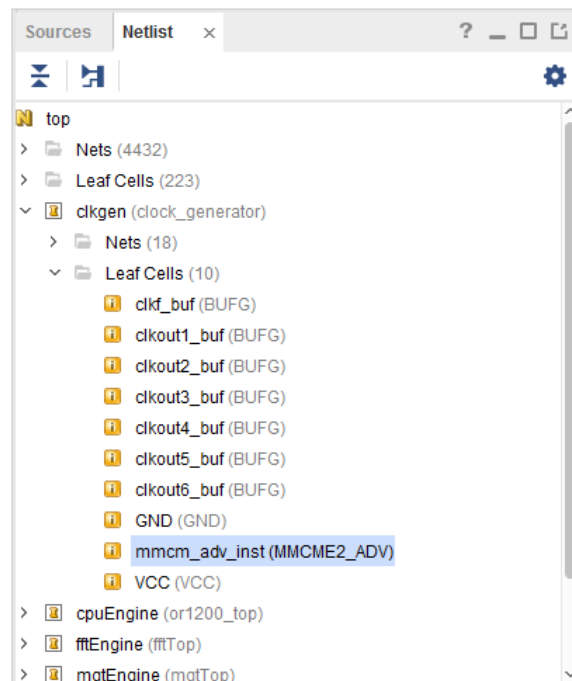


Figure 31: Netlist Window


4. Look in the Cell Properties view, under the Properties tab, and notice that the STATUS is UNPLACED, and there are no IS_LOC_FIXED or IS_BEL_FIXED properties shown.
5. Check this in the Tcl Console by typing:

```
get_property IS_LOC_FIXED [get_cells clkgen/mmcm_adv_inst]
```

This returns a zero, indicating the object is not fixed to a location.

- Zoom into the bottom right of the Device view, to display the lower half of **Clock Region X1Y0**, to prepare for placing the selected object. See the following figure.



Tip: It is easier to place logic in the Device window if Routing Resources are not displayed. If they are displayed, select the **Routing Resources** toolbar button  to disable.

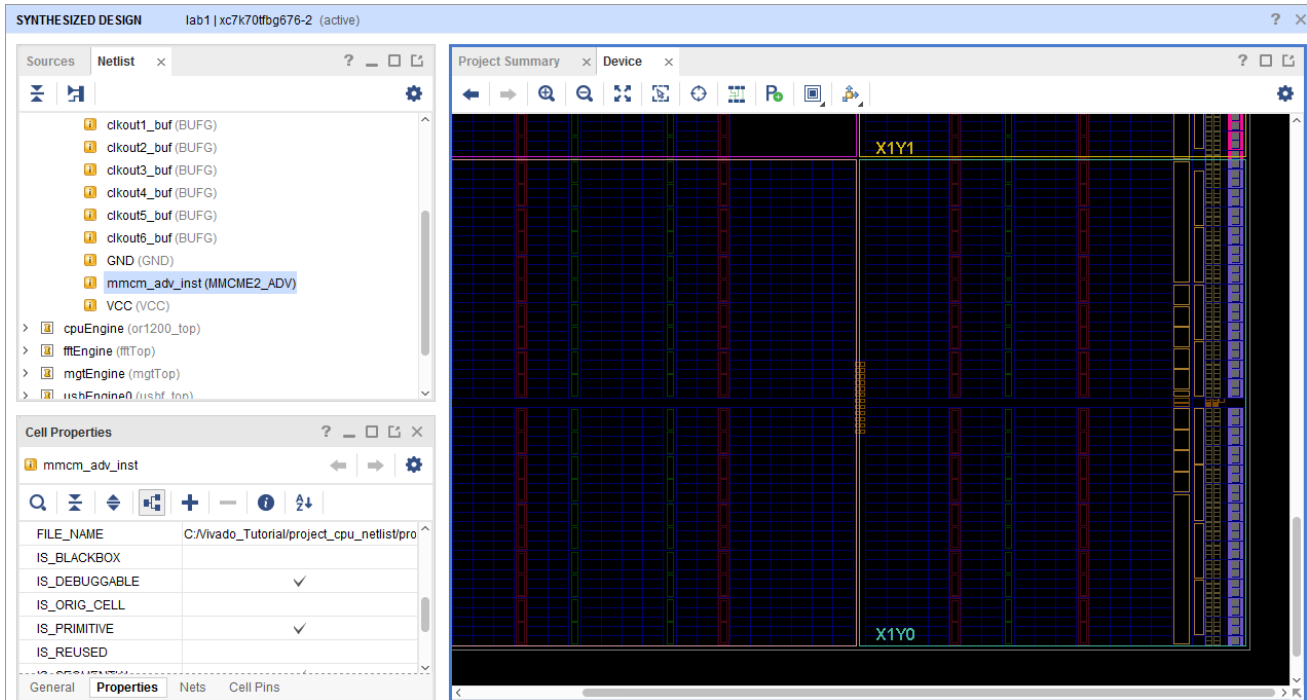


Figure 32: Placing the MMCM

- In the Netlist window, click on the **mmcm_adv_inst** and drag it into the Device window to place it into the bottom right MMCME2_ADV.
- Look in the Tcl Console. You should see something like these three commands:

```
startgroup
place_cell clkgen/mmcm_adv_inst MMCME2_ADV_X1Y0/MMCME2_ADV
endgroup
```

The `startgroup` and `endgroup` Tcl commands bracket sequences of commands to support the undo function in the Vivado tools. If you make a mistake, you can use the `undo` command in the Tcl Console, or the **Edit > Undo** command. This will undo the placement and allow you to redo it. For more information on `startgroup`, `endgroup`, and `undo`, refer to the *Vivado Design Suite Tcl Command Reference Guide* ([UG835](#)).

9. Look at the Properties tab of the Cell Properties window for the MMCM cell you placed.

Notice that the `IS_BEL_FIXED` and `IS_LOC_FIXED` properties are now checked, reflecting that the object has been placed, as shown in the following figure. The `STATUS` property is set to `FIXED` as well.



Tip: The Cell Drag and Drop mode in the Device window determines whether only `IS_LOC_FIXED` is set, or `IS_BEL_FIXED` is also set, when placing objects. Refer to this [link](#) in the Vivado Design Suite User Guide: Using the Integrated Design Environment (UG893) for more information on using the Device window.

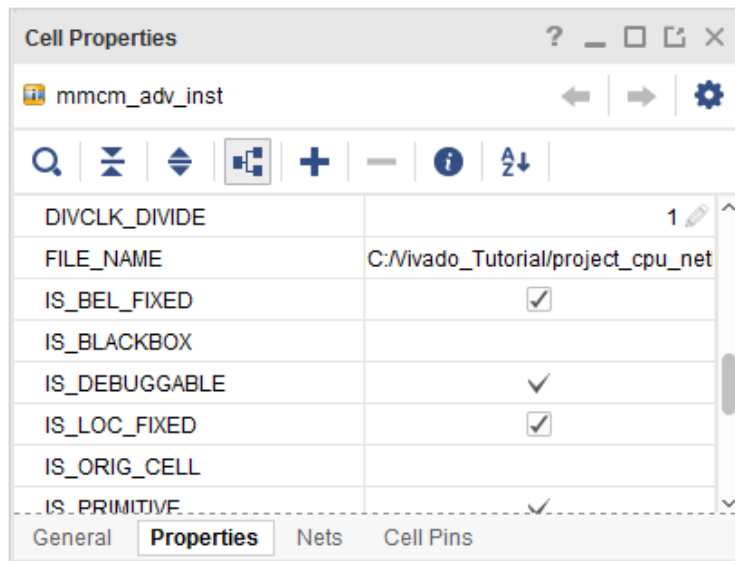



Figure 33: BEL and LOC Placement Constraints

The `IS_BEL_FIXED` and `IS_LOC_FIXED` properties on the object are physical constraints reflecting the placement of the object. These constraint are used by Vivado implementation, and will not be changed by the tool. However, if the properties are invalid, they will cause errors downstream in the design flow.

Notice that when you place `mmcm_adv_inst` in the Device window, the **Save Constraints** button  is enabled. The physical constraints are added to the Vivado tool in-memory design, but are not yet saved to the target constraint file.

Step 3: Defining Additional Physical Constraints

In this step you will define additional physical constraints to the design, such as the `PACKAGE_PIN`, and `PROHIBIT` constraints.

1. Select **Layout > I/O Planning** to open the I/O Planning view layout from the Layout Selector in the tool bar menu.

The I/O Planning view layout displays the Package window, as well as the I/O Ports and Package Pins windows, to facilitate planning the I/O port assignment for the design.

For the purposes of this tutorial, assume the PCB layout has been completed, and therefore certain pins are not accessible on the FPGA package. You can prohibit the Vivado tool from using these pins during placement and routing (assuming you have not already specified all of your I/O assignments).

2. Select the **AA8** pin in the Package window.



Tip: Use the X and Y-axis values on the edge of the Package window to help you locate this pin on the package.

3. With the pin selected, right-click and select **Set Prohibit**.

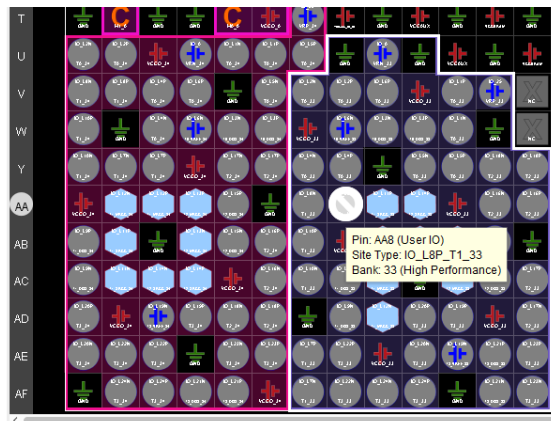


Figure 34: Package Pin A8

When you unselect the pin, you will notice the site now has a red circle with a diagonal line through it, indicating that it is unusable.

4. Look in the Tcl Console and review the TCL command produced by the Vivado IDE:

```
startgroup
set_property prohibit 1 [get_bels IOB_X1Y34/PAD]
set_property prohibit 1 [get_sites AA8]
endgroup
```

Step 4: Defining Constraints with Object Properties

You can create timing and placement constraints as you have seen in this tutorial. You can also change the properties of cells to control how they are handled by Vivado implementation. Many physical constraints are defined as properties on a cell object.

For example, if you discover a timing issue with a RAM in the design, to avoid resynthesis, you can change a property of the RAM cell to add in pipeline registers. After confirming with the designer and validation teams that this is an acceptable approach, you can change the design.

Setting Cell Properties

Because it can be too time consuming and costly to go back to the RTL after synthesis, you can make changes in the netlist as follows.

1. Select **Edit > Find** to open the Find dialog box, seen in the following figure.
 - a. Specify Find **Cells**.
 - b. Under Properties, set **PRIMITIVE_TYPE** to **BMEM.BRAM**.
 - c. Make sure that Search Hierarchically is selected, as shown in the following figure.
 - d. Click **OK**.

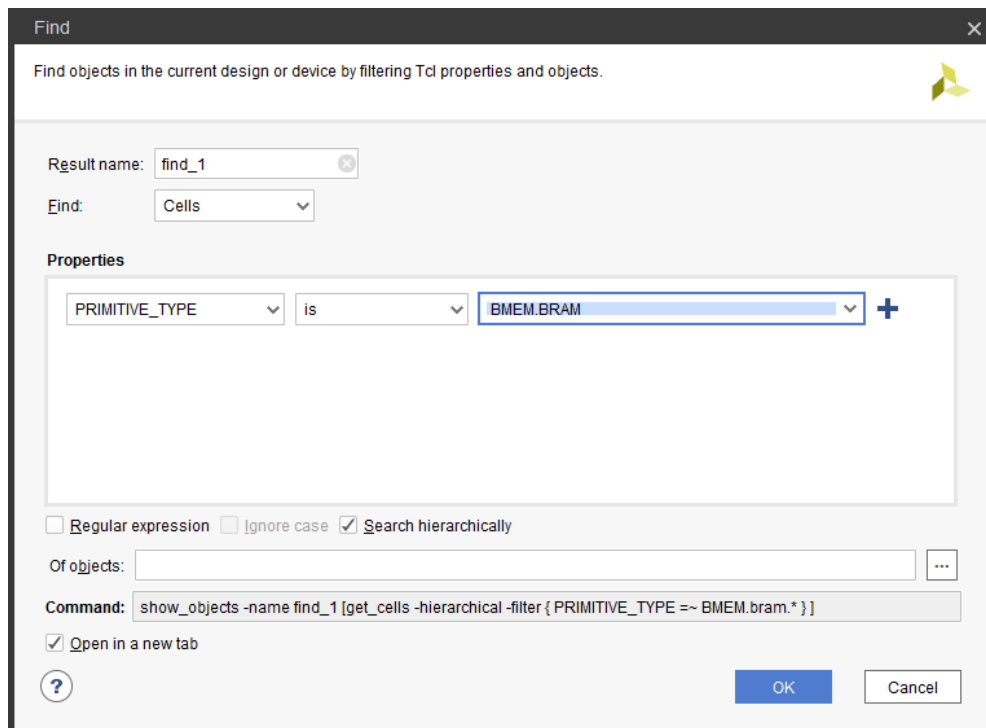



Figure 35: Find Dialog Box

The Find Results window opens.

2. Select the **Show Search** button  on the toolbar menu of the Find Results window.

3. Search for **ingressLoop**, and select the following cell:

```
fftEngine/fftInst/ingressLoop[7].ingressFifo/
```


In the Properties tab of the Cell Properties window, you can see the DOA_REG and DOB_REG are set to zero, indicating that the output registers are disabled.

4. Generate a custom timing report from this cell directly from the Tcl Console. The Tcl command to enter is:

```
report_timing -from [get_cells fftEngine/fftInst/ingressLoop[7].ingressFifo/
buffer_fifo/infer_fifo.block_ram_performance.fifo_ram_reg]
```



Tip: You can copy and paste the cell name from the General tab of the Cell Properties window into the Tcl console.

5. In the upper-right corner of the **Tcl console**, click the **Maximize** button  to maximize the window and better view the timing report.

6. In the data path section of the report, 1.800ns is added by this RAMB.

```
-----
RAMB36E1 (Prop_ramb36e1_CLKBWRCLK_D0B00[16])
net (fo=2, unplaced) 1.800 -0.526 r fftEngine/fftInst/ingressLoop[7].ingressFifo/buffer_fifo/infer_fifo.block_ram_performance.
DSP48E1 0.466 -0.061 r fftInst/toBft[15]_55[0]
transformLoop[7].ct/xOutReg_reg/A[0]
-----
```

7. Restore the **Tcl Console** to its normal size.

8. In the **Properties** tab of the Cell Properties window, select the **DOA_REG** and **DOB_REG** properties for this cell, and change their values from "0" to "1".

You can see the two `set_property` commands run in the Tcl Console.

```
set_property DOA_REG {1} [get_cells {fftEngine/fftInst/ingressLoop[7].ingressFifo/
buffer_fifo/infer_fifo.block_ram_performance.fifo_ram_reg}]
```

```
set_property DOB_REG {1} [get_cells {fftEngine/fftInst/ingressLoop[7].ingressFifo/
buffer_fifo/infer_fifo.block_ram_performance.fifo_ram_reg}]
```

9. Rerun the timing report from the selected cell. The Tcl command to enter is:

```
report_timing -from [get_cells fftEngine/fftInst/ingressLoop[7].ingressFifo/
buffer_fifo/infer_fifo.block_ram_performance.fifo_ram_reg]
```

10. Notice that the **data path delay** for the RAM is now 0.622 ns.

Setting Design Properties

Next, set the configuration mode on the design. This is another property that results in a physical constraint, in this case a property of the design rather than of a cell. To begin, list all of the properties of the current design.

1. List the properties of the design in the Tcl Console:

```
list_property [current_design]
```

This command returns the list of all defined properties on the current design. To make the list more readable, you can use the standard Tcl `join` command to combine the properties output with “\n” newline character, resulting in each property displaying on a separate line.

```
join [list_property [current_design]] \n
```

2. The specific property of interest is `CONFIG_MODE`. To see what values this particular property can accept, use the `list_property_value` Tcl command:

```
join [list_property_value CONFIG_MODE [current_design]] \n
```

3. Use the **Tools > Edit Device Properties** command to set the `CONFIG_MODE` property for the current design.

The Edit Device Properties dialog box opens.

4. Click **Configuration Modes** to open the Configuration Modes panel.
5. Scroll down on the page to find the **Master Serial** configuration mode option, as shown in the following figure.

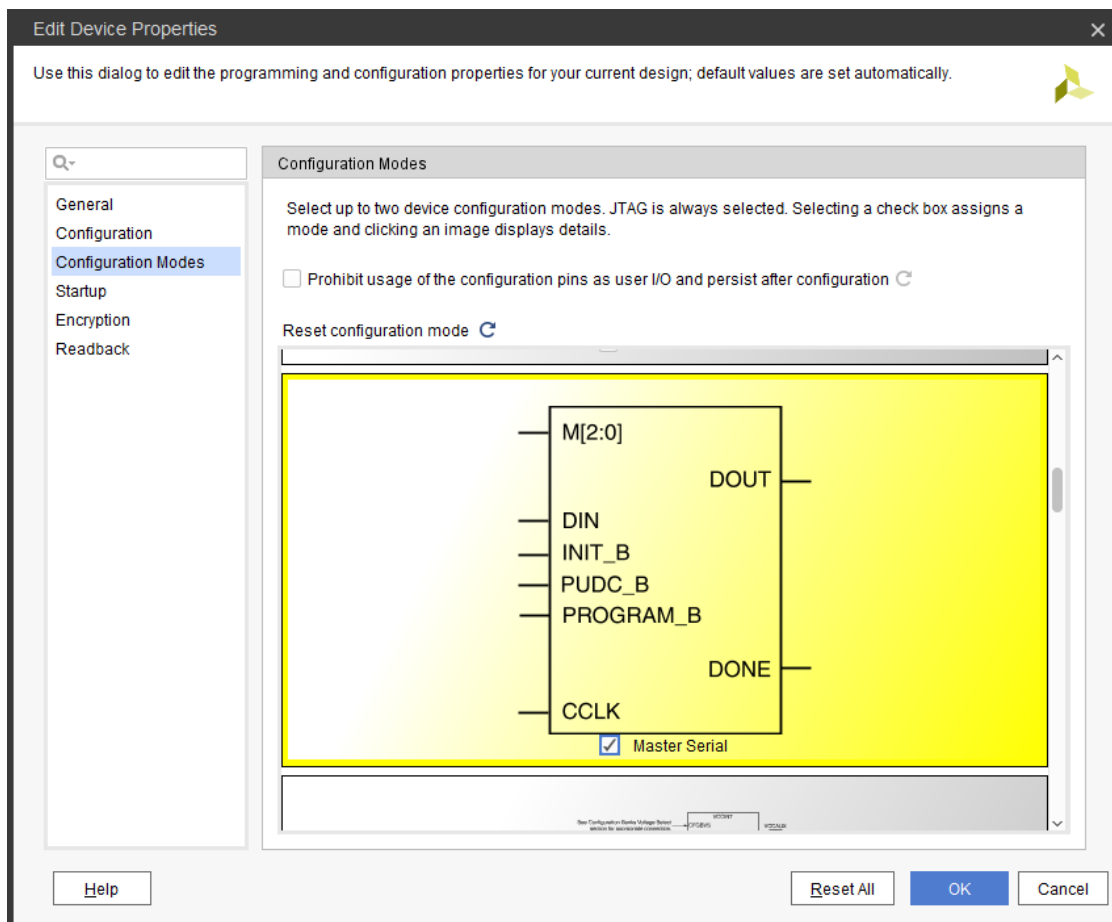


Figure 36: Edit Device Properties – CONFIG_MODE

6. Select the Master Serial configuration mode as shown, and click **OK** to close the dialog box.

The Tcl console shows the `set_property` command that sets the `CONFIG_MODE`:

```
set_property CONFIG_MODE M_SERIAL [current_design]
```

The configuration mode has now been set.

7. Use the `get_property` command to confirm that the `CONFIG_MODE` property was correctly set:

```
get_property CONFIG_MODE [current_design]
```

The property value `M_SERIAL` is returned by the Vivado tool.

Step 5: Saving Constraints

Notice that the Save Constraints icon is enabled because there are new design constraints. The cell and design properties you modified in Lab #2 have been added to the Vivado tool in-memory design, but are not yet saved to the target constraint file.

1. Click the **Save Constraints** button .

The physical constraints you defined in Lab #2 are saved to the target constraint file.

2. Select the **target XDC** (in this case, `timing.xdc`) from the active constraint set in the Sources window to open the file in the Vivado IDE text editor.

Note: You might need to click on the **Reload** link to update the file if it is already opened in the GUI.

Notice that the seven `set_property` commands you used in Lab #2 are saved to the constraint file. Only design constraints are written to the XDC file, not the object queries or reporting commands that you also used in this lab.

3. Look for the following constraints in the open constraint file:

```
set_property BEL MMCME2_ADV [get_cells clkgen/mmc Adv_inst]
set_property LOC MMCME2_ADV_X1Y0 [get_cells clkgen/mmc Adv_inst]
set_property PROHIBIT true [get_bels IOB_X1Y34/PAD]
set_property PROHIBIT true [get_sites AA8]
set_property DOA_REG 1 [get_cells \
{fftEngine/fftInst/ingressLoop[7].ingressFifo/buffer_fifo/infer_fifo.block_ram_\
performance.fifo_ram_reg}]
set_property DOB_REG 1 [get_cells \
{fftEngine/fftInst/ingressLoop[7].ingressFifo/buffer_fifo/infer_fifo.block_ram_\
performance.fifo_ram_reg}]
set_property CONFIG_MODE M_SERIAL [current_design]
```

4. Exit the Vivado IDE.

Conclusion

In this lab, you learned how to use both the Vivado IDE and the Tcl Console to create and verify physical constraints. Most actions performed in the IDE result in Tcl commands being run in the Tcl Console. The Vivado IDE provides powerful interactive capabilities for developing physical and timing constraints, which can then be saved to constraint files and reused as needed.

Please Read: Important Legal Notices

The information disclosed to you hereunder (the "Materials") is provided solely for the selection and use of Xilinx products. To the maximum extent permitted by applicable law: (1) Materials are made available "AS IS" and with all faults, Xilinx hereby DISCLAIMS ALL WARRANTIES AND CONDITIONS, EXPRESS, IMPLIED, OR STATUTORY, INCLUDING BUT NOT LIMITED TO WARRANTIES OF MERCHANTABILITY, NON-INFRINGEMENT, OR FITNESS FOR ANY PARTICULAR PURPOSE; and (2) Xilinx shall not be liable (whether in contract or tort, including negligence, or under any other theory of liability) for any loss or damage of any kind or nature related to, arising under, or in connection with, the Materials (including your use of the Materials), including for any direct, indirect, special, incidental, or consequential loss or damage (including loss of data, profits, goodwill, or any type of loss or damage suffered as a result of any action brought by a third party) even if such damage or loss was reasonably foreseeable or Xilinx had been advised of the possibility of the same. Xilinx assumes no obligation to correct any errors contained in the Materials or to notify you of updates to the Materials or to product specifications. You may not reproduce, modify, distribute, or publicly display the Materials without prior written consent. Certain products are subject to the terms and conditions of Xilinx's limited warranty, please refer to Xilinx's Terms of Sale which can be viewed at <http://www.xilinx.com/legal.htm#tos>; IP cores may be subject to warranty and support terms contained in a license issued to you by Xilinx. Xilinx products are not designed or intended to be fail-safe or for use in any application requiring fail-safe performance; you assume sole risk and liability for use of Xilinx products in such critical applications, please refer to Xilinx's Terms of Sale which can be viewed at <http://www.xilinx.com/legal.htm#tos>.

AUTOMOTIVE APPLICATIONS DISCLAIMER

AUTOMOTIVE PRODUCTS (IDENTIFIED AS "XA" IN THE PART NUMBER) ARE NOT WARRANTED FOR USE IN THE DEPLOYMENT OF AIRBAGS OR FOR USE IN APPLICATIONS THAT AFFECT CONTROL OF A VEHICLE ("SAFETY APPLICATION") UNLESS THERE IS A SAFETY CONCEPT OR REDUNDANCY FEATURE CONSISTENT WITH THE ISO 26262 AUTOMOTIVE SAFETY STANDARD ("SAFETY DESIGN"). CUSTOMER SHALL, PRIOR TO USING OR DISTRIBUTING ANY SYSTEMS THAT INCORPORATE PRODUCTS, THOROUGHLY TEST SUCH SYSTEMS FOR SAFETY PURPOSES. USE OF PRODUCTS IN A SAFETY APPLICATION WITHOUT A SAFETY DESIGN IS FULLY AT THE RISK OF CUSTOMER, SUBJECT ONLY TO APPLICABLE LAWS AND REGULATIONS GOVERNING LIMITATIONS ON PRODUCT LIABILITY.

© Copyright 2012-2018 Xilinx, Inc. Xilinx, the Xilinx logo, Artix, ISE, Kintex, Spartan, Virtex, Zynq, UltraScale, and other designated brands included herein are trademarks of Xilinx in the United States and other countries. All other trademarks are the property of their respective owners.